

CHAMP BL3102 2MP IR Mini Bullet IP Camera

CHAMP



– Full HD 1080p

– ROI

– Corridor Mode



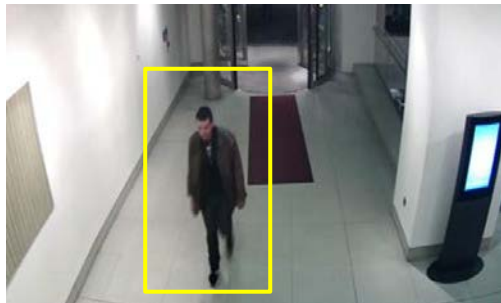
ONVIF

Best-in-class image quality and essential features in an affordable and ultra-compact package. 1080p resolution, H.264 compression, IR LEDs, PoE and IP66 weatherproof, fitting the bill for most applications where a clear image day and night is all that's needed. ROI (Region of Interest) spends your precious bandwidth and storage on the areas that really matter to you, and Corridor mode allows for vertical "portrait"-shaped video streams, that help you to make the most of your field of view in staircases, aisles, tunnels and many more.

Features

- Full HD 1080p
- 1/2.8" CMOS sensor
- H.264 and Motion JPEG compression
- 30 fps at 1920 x 1080
- 2.8 mm, F1.8, Fixed lens
- True day & night with automatic removable IR-cut filter
- Smart feature: Corridor Mode, ROI
- IR 30m range
- RTC with built-in battery
- Tampering detection
- Motion detection
- IP66 weatherproof
- Screwless 3-axis angle adjustment for easy installation on wall or ceiling
- SSL v3 advanced HTTPS encryption
- Full support for Firefox, Safari and Mac OS
- Supports Samba network storage
- Multi-lingual user interface
- ONVIF 2.4 and Profile S compliant
- Free 32-channel NVR software

ROI



ROI(region of interested)
Save streaming by allocating more bandwidth on the important monitoring area.

Corridor Mode



Corridor

Applications



1. Education
2. Residential
3. Retail

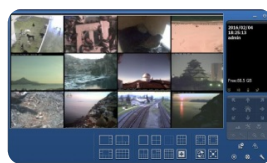
IP Surveillance Solutions

• Free 32ch NVR Software

The most professional NVR software you can get for free!

- Support up to 32 channels
- Up to 32 channels remote live view
- Remote playback 4 channels
- Multi-site / multi-server
- Transcoding (record high quality, transcode to different resolution/ frame rate for remote client to save bandwidth)
- iOS/ Android mobile client (multi-channel live view | playback | PTZ & I/O control)
- E-maps (up to 4 layers | unlimited number of maps | video preview)
- Dual monitor
- ePTZ
- Multi-lingual user interface

*32ch free license for CHAMP cameras, but need to activate license for other brand



• ONVIF

All IP cameras are ONVIF 2.x & Profile S compliant, and continuously upgraded to comply with the latest versions

Technical Specifications

Camera

Model	2MP IR Mini Bullet Camera
Image sensor	1/2.8" CMOS sensor
Lens	2.8 mm, F1.8
Angle of view	96° horizontal
Min illumination	0.05 lux @ F1.8 (color) 0.005 lux (B/W) 0 lux (IR LED on)
IR working distance	30m effective range
Day/Night function	Mechanical IR cut filter Light sensor

Video

Video compression	Motion JPEG H.264 baseline/ main profile/high profile
Resolutions	Motion JPEG/ H.264: 5 resolutions from 1920 x 1080 to 320 x 240 via API 3 resolutions from 640 x 480 to 320 x 240 via API Motion JPEG/ H.264: up to 30 fps at 1920 x 1080
Video streaming	Simultaneous Motion JPEG, H.264 Controllable frame rate and bandwidth Support unicast (Real Time Streaming Protocol)
Image settings	Rotation: mirror, flip, mirror+ flip WDR enhanced Brightness, contrast, saturation, sharpness Overlay capabilities: Time stamp, Title, Title & Time stamp Privacy mask

Network

Security	Multiple user access levels with password protection, HTTPS encryption
Supported protocols	Bonjour, TCP/ IP, DHCP, DNS, DynDNS, PPPoE, ARP, ICMP, FTP, SMTP, NTP, UPnP, RTSP, RTP, RTCP, HTTP, HTTPS, SSL, TCP, UDP
Users	5 simultaneous users

Alarm and Event Support

Alarm and event	Input: motion detection, periodical, tampering detection Output: network storage, FTP, SMTP, HTTP event Pre and post event image
------------------------	--

System

	RJ-45 Ethernet 10/ 100 Base-T(with PoE) Reset push button DC 12V power supply ONVIF 2.4 & Profile S
--	--

General

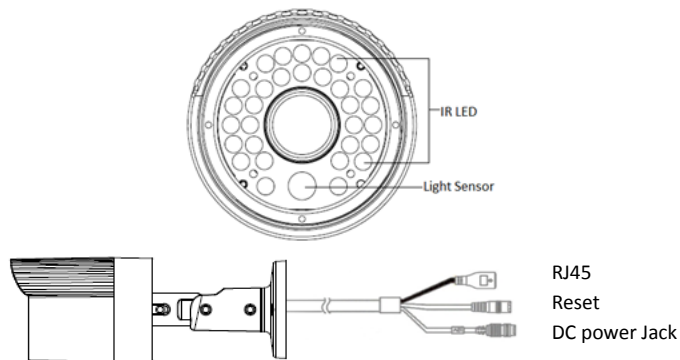
Casing	Metal housing
Housing	IP66 rated
Power	12V DC, 1A Power consumption: Max. 6.1W PoE(Power over Ethernet) built-in IEEE 802.3af

Operating conditions	Starting temperature: -10 ~ 60 °C (14 ~ 140 °F) Working temperature: -30~ 60 °C (-22 ~ 140 °F)
Installation, management and maintenance	Camera management tool on website and web-based configuration. Configuration of backup and restore firmware upgrades over HTTP
Minimum web browsing requirement	Pentium 2.8GHz (or equivalent AMD) 256MB RAM graphic cards (or equivalent on-board graphic cards) 1G RAM Windows 2008, XP, Vista or Windows 7 Mac OS Leopard 10.5 or later
Dimensions (HxWxD)	φ66 x 166 mm, incl. bracket (φ2.6" x 6.5" x 3.5")
Weight	420g excl. power supply
Included accessories	Quick installation guide, mounting and connector kits
Certification	CE, FCC, RoHS

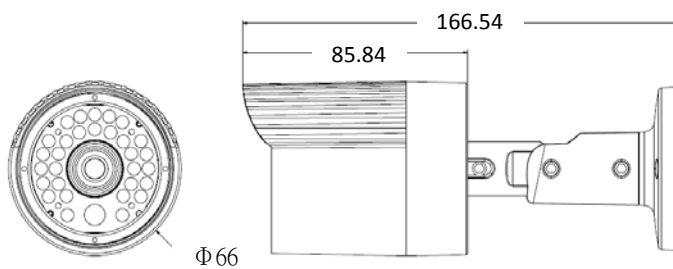
Integration

Video management	Video management software, for viewing, recording and archiving up to 32 cameras
-------------------------	--

Part Names and Functions



Dimensions



Unit:mm



B1, No.207-1, Sec. 3, Beixin Rd., Xindian Dist., New Taipei City 231, Taiwan | www.champsolution.com

Tel : +886-2-7739-2260 | Fax : +886-2-7703-3377 | Mail : inquiry@champsolution.com

© 2015 All rights reserved.
THIS DOCUMENT IS PROVIDED FOR INFORMATIONAL PURPOSES ONLY AND IS NOT INTENDED AS ADVERTISING. ALL WARRANTIES RELATING TO THE INFORMATION IN THIS DOCUMENT, EITHER EXPRESS OR IMPLIED, ARE DISCLAIMED TO THE MAXIMUM EXTENT ALLOWED BY LAW. THE INFORMATION IN THIS DOCUMENT IS SUBJECT TO CHANGE WITHOUT NOTICE. ALL MENTIONED BRAND NAMES ARE REGISTERED TRADEMARKS AND PROPERTY OF THEIR OWNERS.