



## **Vivotek** **IP Surveillance System**

# **Network Camera** **IP3112/3122/3132**

IP3112/3122/3132 are versatile network cameras powered by Vivotek optimal audio and video synchronizing technology. A built-in web server provides easy user interface for remote access to view and configure from anywhere in the world over the Internet with popular Microsoft Internet Explorer. Users just access streaming video/audio from the network camera like browsing any regular web site. More than high-performance network cameras, IP3112/3122/3132 also possess many advanced features to provide the ideal personal or SOHO solution for web attraction, remote surveillance, home security, video conference, etc....

### **Features**

- Built-in camera and high-sensitivity microphone
- High performance and fully configurable MPEG4 compression
- Optimal synchronization of audio and video
- Built-in web server for global access
- Motion detection with three sensitive windows
- Weekly schedule for applications
- Pre/Post alarm snapshots
- Remote control for sensor and alarm
- Customizable homepage



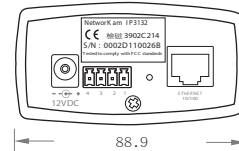
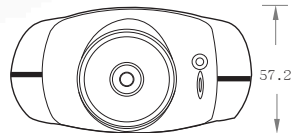
· IP3112 NTSC CCD  
· IP3122 PAL CCD



· IP3132 CMOS

# Technical Specifications

## IP3112/3122/3132



### Model

- IP3112 NTSC CCD
- IP3122 PAL CCD
- IP3132 CMOS

### System

- CPU: Trimedia PNX1300
- RAM: 8MB SDRAM
- ROM: 2MB FLASH ROM

### Networking

- Protocol
  - TCP/IP, HTTP, SMTP, FTP, Telnet, NTP, DNS, DDNS, UPnP and DHCP
- Ethernet
  - 10 baseT or 100 baseT Fast Ethernet auto negotiation

### Video

- Algorithm supported
  - MPEG4(short header mode)
- Features
  - Adjustable image size, quality and bit-rate
  - Time stamp and text overlay
  - 3 motion detection windows
- Resolution

#### IP3112(NTSC)

- Up to 30 frames at 176x120
- Up to 30 frames at 352x240
- Up to 10 frames at 704x480

#### IP3122(PAL)

- Up to 25 frames at 176x144
- Up to 25 frames at 352x288
- Up to 10 frames at 704x576

#### IP3132

- Up to 30/25 frames at 160x120
- Up to 30/25 frames at 320x240
- Up to 10 frames at 640x480

### Camera Specification

- IP3112/3122
  - 1/4 inch color CCD image sensor
  - 512(H)x492(V)(IP3112)/512(H)x582(V)(IP3122)
  - 1 Lux / F2.0
  - AGC, AWB, AES
  - Electronic shutter:1/60 (1/50)~1/100,000sec.
- IP3132
  - 1/4 inch color CMOS sensor
  - 640x480
  - 1.5Lux / F2.0
  - AGC, AWB
  - Electronic shutter:1/60~1/15,000sec.

### Lens

- IP3112/3122
  - Standard CS-mount type, 6.0mm, F1.8
- IP3132
  - Standard CS-mount type, 4.0mm, F2.0

### Audio

- 24kbps
- Supporting audio mute

### Microphone

- Omni-directional
- Frequency
  - 50 ~ 16000Hz
- S/N ratio
  - More than 60dB

### General I/O

- 1 sensor input max. 12VDC 50mA
- 1 relay output max. 24VDC 1A / 125VAC 0.5A

### LED Indicator

- Dual color system status indicator

### Dimension

- Length: 138mm
- Width: 88.9mm
- Height: 57.2mm

### Weight

- NET. 220g

### Power

- Consumption:
  - IP3112/IP3122: near 4.8W
  - IP3132: near 3.96W
- Input: 100-240VAC, 50/60Hz, 0.4A
- Output: 12VDC, 1.5A

### Operating Environment

- Temperature: 0~50°C(32~122°F)
- Humidity: 95% RH

### EMI & Safety

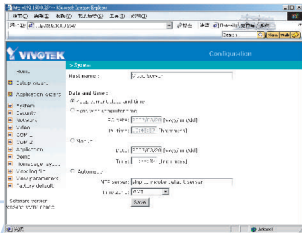
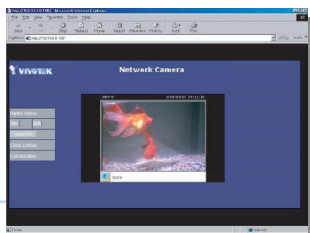
- CE, FCC

### Viewing System Requirement

- Operation system: Microsoft Windows 98 SE, ME, 2000, XP
- Browser: Internet Explorer5.X or above

### Free Bundled ST3402 Software

- Remote configuration and control sixteen devices
- Event-triggered, scheduled, manual recording
- Instant search with preview windows
- Fast/slow forward replay and pause
- Hard disk quota warning
- Scheduled recording
- AVI format export



All specifications are subject to change without notice.  
All other trademarks are owned by their respective companies.



**VIVOTEK INC.**

6F, No. 192, Lien-Cheng Rd.,  
Chung-Ho, Taipei County, Taiwan  
Tel: +886 2 82455282  
E-mail: sales@vivotek.com  
Web: www.vivotek.com

