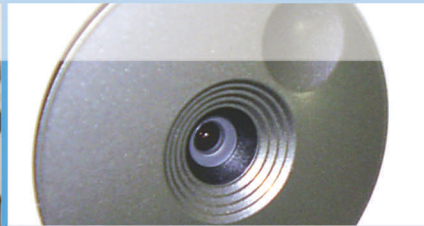


3GPP/ISMA Network Camera

The VIVOTEK IP7135/IP7137 is a 3GPP/ISMA-compatible network camera, offering superior image quality and efficient bandwidth by MPEG-4 implementation. Users can easily access it and receive synchronized video and audio by computers, cellphones, or media adapters with TV, anytime, anywhere for indoor surveillance and remote monitoring.



IP7135 / IP7137

Features

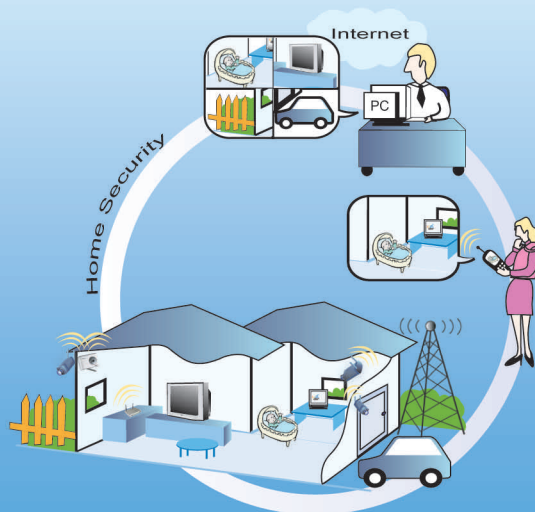
- Live Video and Audio Monitoring via 2.5G/3G Mobile Phone or Media Adapter
- MPEG-4 Video Compression (Simple Profile)
- Compact Size with Stylish Design
- Easy to Install and Configure
- Optimized Synchronization of Audio and Video
- 802.11g Wireless Connection (IP7137)
- Supports 3GPP/ISMA RTSP (Real Time Streaming Protocol)
- Intelligent Motion Detection
- Superior Low Light Performance
- Excellent Image Quality with Up to 30 Frames Per Second in Full VGA Resolution

3GPP/ISMA Network Camera

IP7135 / IP7137



- Cellphone with 3GPP player
- ISMA compliant devices
- Real Player 10.5
- Quick Time 6.5
- Packet Video Player 3.3



Technical Specifications

| | | | |
|-----------------------|---|-----------------------------|---|
| Models | <ul style="list-style-type: none"> • IP7135 (CMOS) • IP7137 (CMOS, wireless) | Audio | <ul style="list-style-type: none"> • Algorithm GSM-AMR/MPEG4 AAC • Supports audio mute |
| System | <ul style="list-style-type: none"> • CPU: VVTK-1000 SoC • RAM: 32MB SDRAM • ROM: 4MB FLASH ROM | Microphone | <ul style="list-style-type: none"> • Omni-directional • Frequency 50~16000Hz • S/N ratio More than 60dB |
| Networking | <ul style="list-style-type: none"> • Protocols UPnP, TCP/IP, RTSP/RTP/RTCP, HTTP, SMTP, FTP, Telnet, NTP, DNS, DDNS, DHCP and PPPoE • Ethernet 10 baseT or 100 baseT Fast Ethernet auto negotiation • Wireless (IP7137) 802.11g wireless LAN | Security | <ul style="list-style-type: none"> • ID/Password authentication |
| Video | <ul style="list-style-type: none"> • Algorithm MPEG4 simple profile for streaming video JPEG for still image • Features Adjustable image size, quality and bit-rate Time stamp and text caption Three configurable motion detection windows Flip & mirror • Resolution Up to 30/25 frames at 160x120 Up to 30/25 frames at 176x144 Up to 30/25 frames at 320x240 Up to 30/25 frames at 640x480 | LED Indicator | <ul style="list-style-type: none"> • Two color system status indicators |
| | | Dimensions | <ul style="list-style-type: none"> • Depth: 34.8mm • Width: 109.5mm • Height: 77.2mm |
| | | Weight | <ul style="list-style-type: none"> • Net: 150g (IP7135) • Net: 165g (IP7137) |
| | | Power | <ul style="list-style-type: none"> • 5VDC |
| | | Operating Environments | <ul style="list-style-type: none"> • Temperature: 0~50°C (32~122°F) • Humidity: 85% RH |
| Camera Specifications | <ul style="list-style-type: none"> • 1/4" color CMOS sensor • Resolution: 640(H)x480(V) • 1.0Lux/F2.0 • AGC/AWB/AES • Electronic Shutter: 1/60 to 1/15,000 sec. | EMI & Safety | <ul style="list-style-type: none"> • CE, FCC |
| Lens | <ul style="list-style-type: none"> • 4.0mm, F2.0 | Viewing System Requirements | <ul style="list-style-type: none"> • Operating system: Microsoft Windows 98 SE, ME, 2000, XP • Browser: Internet Explorer 5.0 or above • Cellphone: 3GPP player • Real Player 10.5 • Quick Time 6.5 • Packet Video Player 3.0 |

All specifications are subject to change without notice.
All other trademarks are owned by their respective companies.



6F, No.192, Lien-Cheng Rd., Chung-Ho, Taipei County, Taiwan
Tel: +886 2 82455282
Fax: +886 2 8245532
E-mail: sales@vivotek.com
Http://www.vivotek.com

