
Reach All-In-One Server

----- DSS-R-CL Series

User Manual



Contents

Chapter 1	Introduction to the User Manual	4
1.1	Introduction	4
1.2	Purpose	4
1.3	Declaration	4
Chapter 2	Product Overview	5
2.1	Product Introduction	5
2.2	Feature and Specification Description	5
Chapter 3	Installation and Configuration	6
3.1	Panel Layout	6
3.2	Power on and Running	7
3.3	Configuration Instruction	7
Chapter 4	Use Instruction	10
4.1	System Logon	10
4.1.1	System logon page	10
4.1.2	logout/relog-on the system	11
4.1.3	Plug-in installation	11
4.1.4	Interface layout	12
4.2	Parameters Setting	13
4.2.1	Video parameters setting	13
4.2.2	DVI Parameters Setting	14
4.2.3	Audio parameters setting	14
4.2.4	Layout setting	15
4.3	Recording	15
4.3.1	WEB recording mode	15
4.3.2	LCD panel quick recording	16
4.4	File Management/Play on Demand/Download	16
4.4.1	File list	16
4.4.2	View/modify file information	17
4.4.3	Play on demand/download file:	17
4.4.4	Delete file	18
4.5	System Information	18
4.6	System Setting	18
4.6.1	Language	19
4.6.2	Multicast Switch	19
4.6.4	Update System	20
4.6.5	Upload Logo picture	20
4.6.7	IP Address Modification	21
4.7	User Management (Optional Function)	21
4.7.1	Change password:	21
4.7.2	Add new user	21
4.7.3	User authorities	22

4.7.4 Delete user	22
4.7.5 Other user login	23
4.8 Guest User.....	23

Reach Software

Chapter 1 Introduction to the User Manual

Thank you for purchasing Reach's All-In-One Server. We will provide you the best service.

1.1 Introduction

This operation manual is compiled to ensure easy installation and configuration of the product. Please read the manual carefully before using so as to make best use of all its functions.

1.2 Purpose

This manual is to help you get familiar with and properly use the All-In-One Server.

1.3 Declaration

Any part of this document, including the text, image and graph, is the property of Shenzhen Reach Software Technology Co., Ltd. No one shall copy any part of this document in any way without the prior written consent of Shenzhen Reach Software Technology Co., Ltd. Shenzhen Reach Software Technology Co., Ltd reserves the right to revise this document without notifying any person or group.

Shenzhen Reach Software only provides warranty of limited liabilities for the software and hardware product. For any loss of the users caused by the design defect of the software and hardware, our company will compensate the user with the amount up to the price specified in the product purchase contract.

Right of trademark: Reach, Reach Software, DSS-R, DSS-ENC, and DSS-DEC are the trademarks of Shenzhen Reach Software Technology Co., Ltd. Windows, Windows 95, Windows 98, Windows NT, Windows 2000 and WindowsXP are the trademarks of Microsoft. Other trademarks are the properties of their respective companies.

This manual is subject to update without prior notice. If you come across any problem that cannot be solved according to the manual, please contact our technical department for solutions. Thank you.

Chapter 2 Product Overview

2.1 Product Introduction

As new generation visual information recording and transmission equipment, REACH All-In-One Server is developed by Shenzhen Reach Software Technology Co., Ltd. Characterized by compact size and portability, it integrates the input interfaces of video, audio and DVI signals, supporting random combined recording of one-way HD DVI (HD video or VGA signal), one-way SD video and one-way HD audio signal. The recorded file is saved in single-flow mode. It supports the synchronous recording of the video, audio and computer screen signals, thus satisfying the users' needs of recording and playing the visual information in meeting, training and teaching.

2.2 Feature and Specification Description

2.2.1 Hardware Parameters

Outline dimensions: L x W x H = 350mm x 270mm x 53mm
Weight: 5kg

2.2.2 Environmental Parameters

Storage temperature: -20~60°C
Relative humidity: 5%~95%
Working temperature: 0~45°C

2.2.3 Electrical Specifications

Input voltage: AC 100~240V 50~60Hz
Power consumption: 100W

2.2.3 Network interface

LAN: LAN interface connected to Intranet

Chapter 3 Installation and Configuration

3.1 Panel Layout

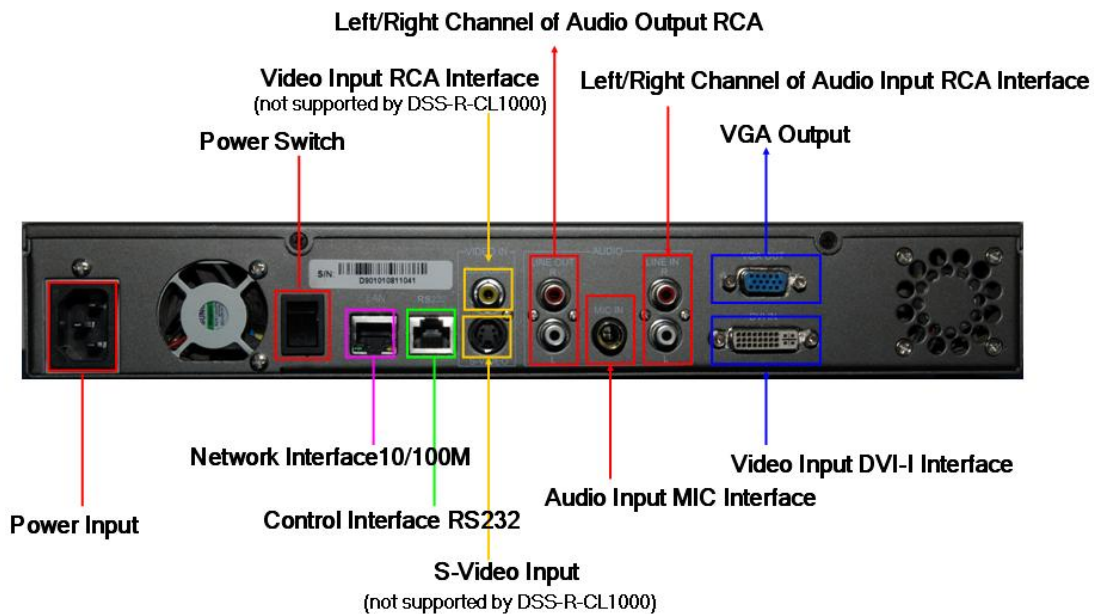
3.1.1 Front panel



3.1.2 LED

Name	Description
PWR	Power LED, It will be ON during normal power-on.
RUN	Run LED, flashes slowly and rhythmically when the system is running.
LAN	The LED will be ON when there is network connection.
LCD	LCD panel. It will display the operating status and relevant information during operation.

3.1.3 Rear panel



As shown in the rear view of the integrated All-In-One Server, you only need to connect the signal cables to the corresponding ports.

3.2 Power on and Running

In normal situation, power on the equipment after connecting the power cable to the corresponding port at the rear panel, the LCD panel will display “Starting...”. Wait for 1 minute, when the All-In-One Server starts up automatically, the LCD panel will display the current input definition, serial number, IP address, recording status and other relevant information.

3.3 Configuration Instruction

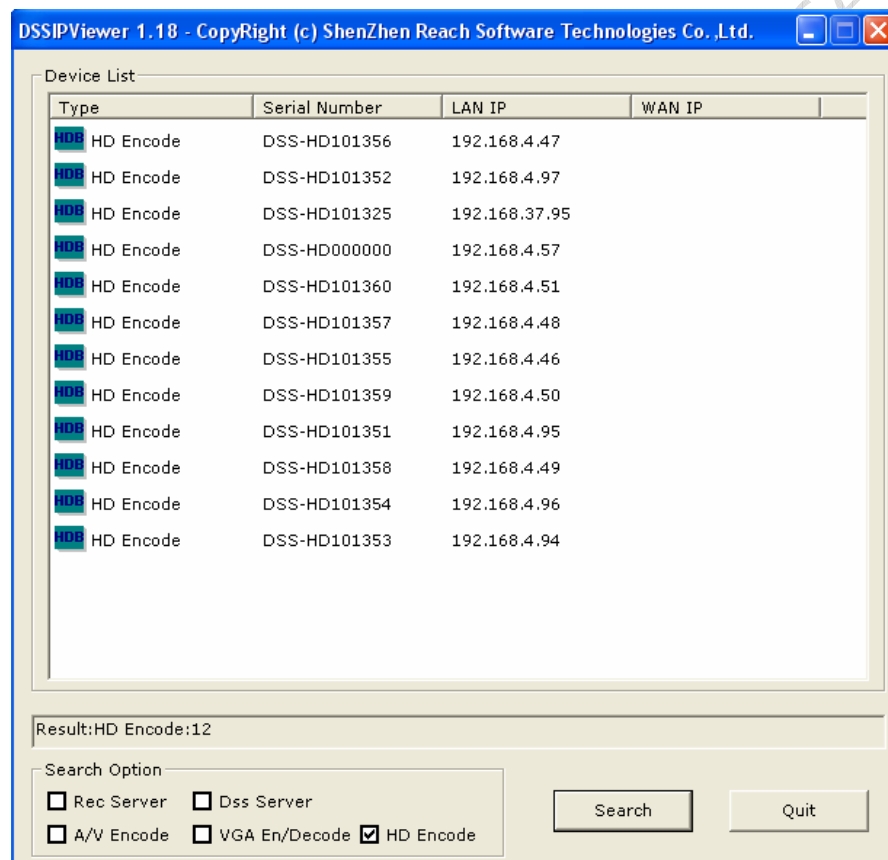
3.3.1 Environment for software and hardware installation

- √ Make sure that the server is on a stable flat surface.
- √ Make sure the IP network connection is available. 100Mbps network or above. (1000M network recommended).
- √ Please install the Server according to the physical and electrical environment equipment mentioned above.
- √ Suggested configuration of the PC for the installation of RecPlayer:
 - CPU: Dual Core Processor 2.2Ghz or above
 - DISPLAY:1024*768 resolution or above
 - Video card: 512M Independent graphics or above

- Memory: 1G or above
- HDD: 1GB or above
- OS: Win2000/XP/Win 7

3.3.2 Search for the query encoder IP address

Use the DSSIpViewer.exe in the CD delivered together with the product for searching the server IP address. Double click this program and then click **[Search]** button to find the list of all the existing All-In-One Servers in the network, as shown in the following figure:



Note for the search result:

All-In-One Server: it will search for all All-In-One Servers in the network and list the name(s) and IP(s).

Note:

(1) When using the DSSIpViewer to search the equipments, the All-In-One Server and the computer running DSSIpViewer.exe must be within the same physical network (the IP address segment may be different), otherwise the DSSIpViewer can not find

the equipments.

(2) The search may also fail if the network is set with a VLAN, route, three-layer switch or special firewall between the equipments and the computer running DSSIpViewer.

Besides, you may also view the IP address of the current All-In-One Server at the rolling information display field of the LCD panel.

Reach Software

Chapter 4 Use Instruction

4.1 System Logon

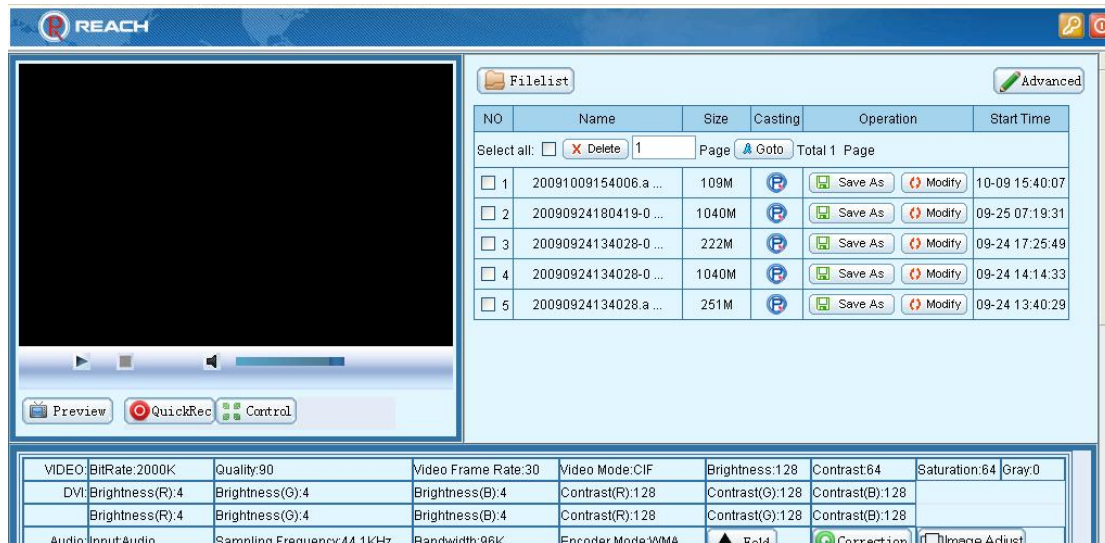
4.1.1 System logon page


Open IE browser, type in the IP address of the All-In-One Server in the address field, and then press Enter. The following interface will appear.




Please enter a correct user name and password in the authentication box and logon to the management interface of the All-In-One Server. The default user's name and password are both [admin].

4.1.2 logout/relog-on the system



Logout: After you logon to the system, if you click the bottom  on the page, you will be logged out of the system management or client interface. And your logout will not affect the operation of the server, and the current working information of the server will be provided as soon as you logon to the system next time.

Re-logon: if you click the bottom  at the top of the page, you will be brought back to the system logon interface and logon to the system with another user name.

4.1.3 Plug-in installation

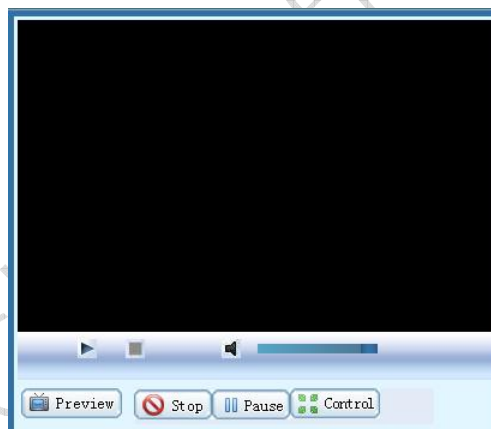
If you have never installed this monitoring software to your computer, the system will prompt you to install it after you logon to the All-In-One Server interface. As shown in the following figure:



If the above prompt does not appear on some computers, the left upper corner of the video window will display as the following figure:

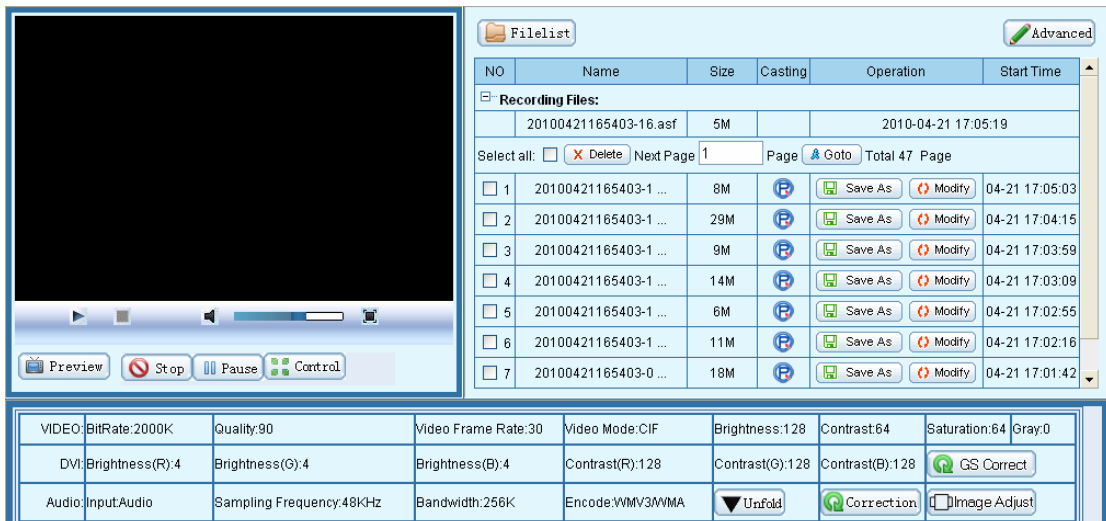


Click [**Here**] to install the software, and then the video window will be like this after the installation.



4.1.4 Interface layout

The default interface of the All-In-One Server will be displayed after installation of the plug-in software. The left upper section is the video play control field. The right upper section is the file list play and download field. The bottom section is the parameter view and setting field.




The screenshot shows the REACH software interface. On the left is a video preview window with playback controls (Preview, Stop, Pause, Control). On the right is a 'Filelist' table with columns for NO, Name, Size, Casting, Operation, and Start Time. Below the table are various parameter settings for video and audio.

NO	Name	Size	Casting	Operation	Start Time
Recording Files:					
	20100421165403-16.asf	5M			2010-04-21 17:05:19
Select all: <input type="checkbox"/> <input checked="" type="checkbox"/> Delete Next Page 1 Page Goto Total 47 Page					
<input type="checkbox"/>	20100421165403-1 ...	8M		Save As Modify	04-21 17:05:03
<input type="checkbox"/>	20100421165403-1 ...	29M		Save As Modify	04-21 17:04:15
<input type="checkbox"/>	20100421165403-1 ...	9M		Save As Modify	04-21 17:03:59
<input type="checkbox"/>	20100421165403-1 ...	14M		Save As Modify	04-21 17:03:09
<input type="checkbox"/>	20100421165403-1 ...	6M		Save As Modify	04-21 17:02:55
<input type="checkbox"/>	20100421165403-1 ...	11M		Save As Modify	04-21 17:02:16
<input type="checkbox"/>	20100421165403-0 ...	18M		Save As Modify	04-21 17:01:42

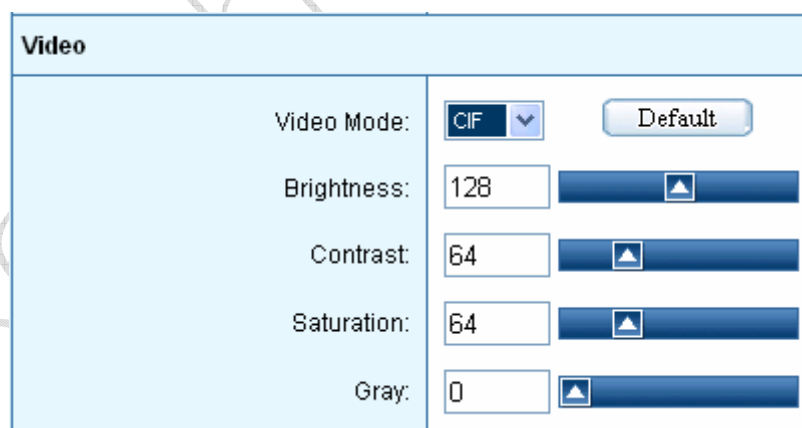
VIDEO:BitRate:2000K	Quality:90	Video Frame Rate:30	Video Mode:CIF	Brightness:128	Contrast:64	Saturation:64	Gray:0
DVI: Brightness(R):4	Brightness(G):4	Brightness(B):4	Contrast(R):128	Contrast(G):128	Contrast(B):128		GS Correct
Audio:Input:Audio	Sampling Frequency:48KHz	Bandwidth:256K	Encode:WMV3/WMA	Unfold			Image Adjust

4.2 Parameters Setting

Click the button  in the parameter view and setting field.

4.2.1 Video parameters setting

Then the current video parameter setting information will appear under the button, as shown in the following figure:



The screenshot shows the 'Video' parameter settings window. It contains the following settings:

- Video Mode:** A dropdown menu set to 'CIF' with a 'Default' button next to it.
- Brightness:** A numeric input field set to '128' with an up/down arrow control.
- Contrast:** A numeric input field set to '64' with an up/down arrow control.
- Saturation:** A numeric input field set to '64' with an up/down arrow control.
- Gray:** A numeric input field set to '0' with an up/down arrow control.

Video Mode: D1/CIF/QCIF

Brightness: adjust the brightness of video;

Contrast: adjust the contrast of the video;

Saturation: adjust the saturation of the video;

Gray: adjust the gray of the video;

Default: recover the configured parameters back to the default setting.

4.2.2 DVI Parameters Setting

Display the current DVI parameter setting information, as shown in the following figure:

DVI			
Brightness(R):	<input type="text" value="4"/>	<input type="range" value="4"/>	<input type="button" value="DVI Default"/>
Brightness(G):	<input type="text" value="4"/>	<input type="range" value="4"/>	<input type="button" value="VGA Default"/>
Brightness(B):	<input type="text" value="4"/>	<input type="range" value="4"/>	
Contrast(R):	<input type="text" value="128"/>	<input type="range" value="128"/>	
Contrast(G):	<input type="text" value="128"/>	<input type="range" value="128"/>	
Contrast(B):	<input type="text" value="128"/>	<input type="range" value="128"/>	

Brightness(R): adjust the red brightness of the input signal;

Brightness(G): adjust the green brightness of the input signal;

Brightness(B): adjust the blue brightness of the input signal;

Contrast(R): adjust the red contrast of the input signal;

Contrast(G): adjust the green contrast of the input signal;

Contrast(B): adjust the blue contrast of the input signal;

DVI Default: recover the configured parameters back to the default DVI setting;

VGA Default: recover the configured parameters back to the default VGA setting.

Note: it does not support the parameters adjustment of digital signals like brightness and contrast.

4.2.3 Audio parameters setting

Display the current audio parameter setting information, as shown in the following

figure:

Audio	
Input	<input checked="" type="radio"/> Line <input type="radio"/> Mic Encoder Mode: <input type="radio"/> WMV3/WMA <input checked="" type="radio"/> H264/AAC
Sampling Frequency:	44.1KHz
Bandwidth:	164 Kbps(32 ~ 256Kbps)
Left:	31 <input type="range"/>
Right:	31 <input type="range"/>

Input mode settings: Line / Mic;

Encoding Mode: WMV3/WMA, H264/AAC (Files recorded with WMV3/WMA can be play directly with Microsoft Media Player.)

Sampling Frequency: 44.1KHZ/48KHZ optional;

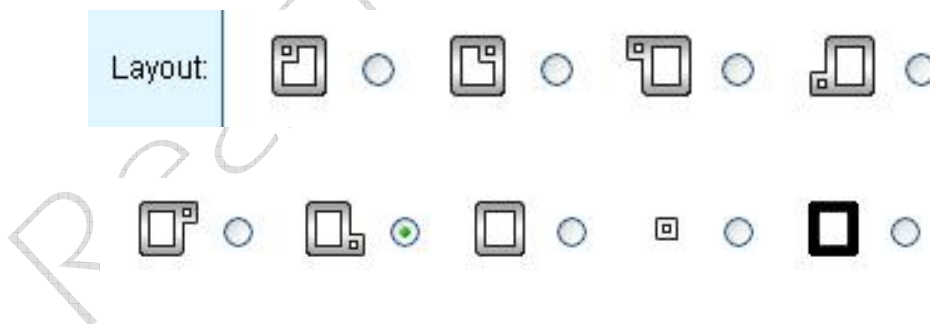
Bandwidth: to adjust the audio, 32 ~ 256Kbps optional;

Left: adjust the volume of the left channel;

Right: adjust the volume of the right channel;

4.2.4 Layout setting

Display the current image layout setting information, as shown in the following figure:




Users can select the appropriate layout based on demand.

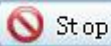

Note: if the signal source input is 1080i, small video window display mode is not supported! (PIP and POP mode settings are invalid)

4.3 Recording


4.3.1 WEB recording mode

Click , then the current state of recorded documents will display at the right of the page.

NO	Name	Size	Casting	Operation	Start Time
☐ Recording Files:					
	20090923143007.asf	1M			2009-09-23 14:30:07

Click   when recording, you can pause or stop recording. After the recording is stopped, the file will be immediately generated and be played on demand online.

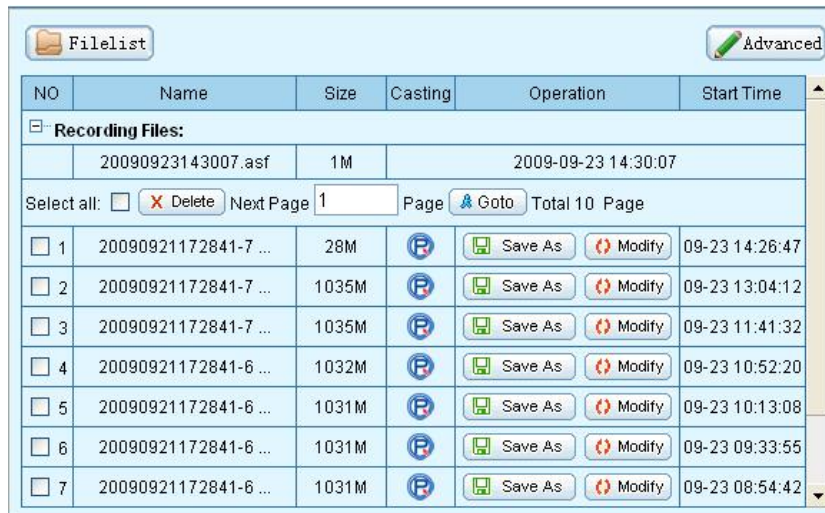
4.3.2 LCD panel quick recording

As shown in the figure , press the [Record] button on the front panel of the All-In-One Server and the unit begins recording. If you want to stop it, press the [Stop] button. This function is very convenient, for it can record easily even if the All-In-One Server is not connected to the network..

4.4 File Management/Play on Demand/Download

4.4.1 File list

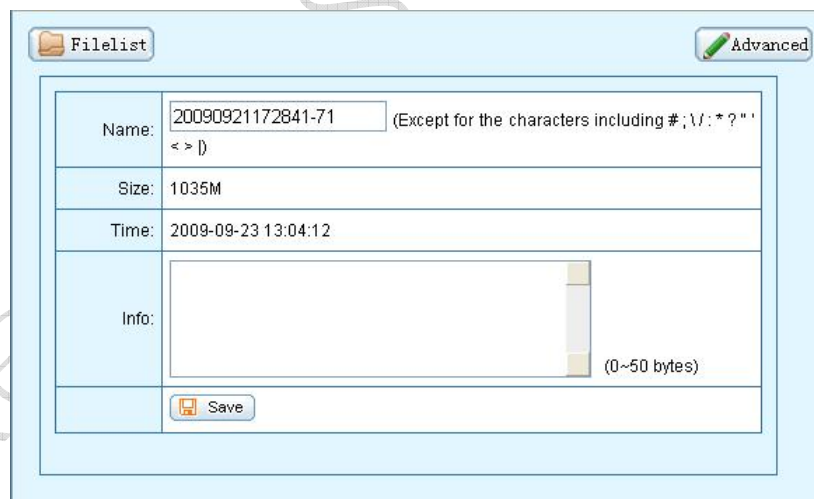
All the file lists are displayed in the upper right of the main interface. In this dialog box, you can view the file information and perform such operations as renaming files, playing on demand files, downloading files, and deleting files, as shown in the following figure:



NO	Name	Size	Casting	Operation	Start Time
Recording Files:					
	20090923143007.asf	1M			2009-09-23 14:30:07
Select all: <input type="checkbox"/> <input checked="" type="checkbox"/> Delete Next Page 1 Page Goto Total 10 Page					
<input type="checkbox"/> 1	20090921172841-7 ...	28M		Save As Modify	09-23 14:26:47
<input type="checkbox"/> 2	20090921172841-7 ...	1035M		Save As Modify	09-23 13:04:12
<input type="checkbox"/> 3	20090921172841-7 ...	1035M		Save As Modify	09-23 11:41:32
<input type="checkbox"/> 4	20090921172841-6 ...	1032M		Save As Modify	09-23 10:52:20
<input type="checkbox"/> 5	20090921172841-6 ...	1031M		Save As Modify	09-23 10:13:08
<input type="checkbox"/> 6	20090921172841-6 ...	1031M		Save As Modify	09-23 09:33:55
<input type="checkbox"/> 7	20090921172841-6 ...	1031M		Save As Modify	09-23 08:54:42

4.4.2 View/modify file information

For all the file lists, file names and file sizes stored in the All-In-One Server, to modify the file name or the description information of the file, just click the **[Modify]** button and then modify the related information in the prompted modification dialog box (including the modified file names and file details, etc.), as shown in the following figure:



Filelist Advanced

Name: (Except for the characters including # ; \ : * ? " ' < > |)

Size: 1035M

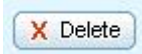
Time: 2009-09-23 13:04:12

Info: (0~50 bytes)

4.4.3 Play on demand/download file:

To online play on demand the files stored in the server, click the button . The system will automatically call the player to play the file. If you need to download the file stored in the server, click the **[Save as]** button, and then select the local disk path and the file name in the "File saved as..." dialog box.

4.4.4 Delete file

To delete the file stored in the server, please select the file in the list, click  button, and then click [OK] in the prompted confirmation dialog box.



4.5 System Information

Click the [Advanced] button on the home page, and then the server's system information can be viewed on the prompted new page.



4.6 System Setting

Click [Configuration] the server's system settings can be viewed.

Language	
Language:	<input checked="" type="radio"/> English <input type="radio"/> Simple Chinese <input type="radio"/> Traditional Chinese
<input type="button" value="Save"/>	

Modification	
User Name:	<input type="text" value="admin"/>
original Password:	<input type="password"/>
Password:	<input type="password"/>
Password Confirm:	<input type="password"/>
<input type="button" value="Save"/>	

Multicast Switch			
Multicast Address	Multicast Port Number	Multicast Content	Operation
<input type="text" value="236.0.0.9"/>	<input type="text" value="45000"/>	<input checked="" type="checkbox"/> V1 <input checked="" type="checkbox"/> Audio	<input type="button" value="Turn on"/>

4.6.1 Language

Set the language display interface of system WEB

4.6.2 Multicast Switch

Turn On / Turn Off the multicast function.

PTZ Protocol Upgrade	
Upgrade File:	<input type="text"/> <input type="button" value="Browse..."/>
<input type="button" value="Upload"/>	
Attention: 1. INI files for the agreement document. 2. After uploaded a updated file, please restart the system to complete the upgrade operation.	




Update System	
Upgrade File:	<input type="text"/> <input type="button" value="Browse..."/>
<input type="button" value="Upload"/>	
Attention: 1. It takes some time to upload updated file, please do not make other operations while the file is uploading. 2. After uploaded a updated file, please restart the system to complete the upgrade operation.	


4.6.3 PTZ Protocol Upgrade

Upload PTZ protocol witch match customer's PTZ camera, so that customer can remote control the camera

4.6.4 Update System

The system software version's upgrade operation

Upload Logo picture	
JPG picture:	<input type="text"/>  Browse...
 Upload  Remove	
Attention: 1.Upload picture must be a jpg format,picture size of less than 200K.	

FTP Configuration	
Server upload address:	<input type="text"/>
Server port:	<input type="text"/>
Username:	<input type="text"/>
Password:	<input type="text"/>
Allow to upload:	<input type="checkbox"/>
Attention: Require FTP server should be client passive mode to upload the file.	
 Save	

4.6.5 Upload Logo picture

After uploading LOGO file image (JPG format), the uploaded Logo image can be seen in the POP display mode.

4.6.6 FTP Configuration

Type in FTP server's IP address, port, username and password, and choose allow to upload. After you active this function, All-In-One Server will transmit the recorded file automatically to FTP server, as soon as the recording completed.

NOTE: Modification will take effect after restart All-In-One Server

IP Address Modification	
LAN	
IP Address:	<input type="text" value="192.168.4.97"/>
Subnet Mask:	<input type="text" value="255.255.0.0"/>
Gateway:	<input type="text" value="192.168.0.1"/>
<input type="button" value="Modify"/>	
Attention: 1. Please check the IP address carefully, in case of address conflict. 2. The server will restart automatically, after the server's IP address has been modified.	

4.6.7 IP Address Modification

After entering valid IP address, subnet mask and default gateway, click **[Restart]**. The new IP address will take effect after the server restarts.

4.7 User Management (Optional Function)

Click the **[User]**, server's system settings can be seen.

User list

User Name	Type	Operation
admin	Super Administrator	<input type="button" value="Modify"/>
1	User	<input type="button" value="Modify"/> <input type="button" value="Delete"/> <input type="button" value="Detail"/>

4.7.1 Change password:

Designated user's system login password can be easily changed by clicking **[Modify]** button.

4.7.2 Add new user

Click **[Add new user]**, enter the user's name and password, and then click **[Save]**.

➤ Add/Modify
☰

User Name:	<input type="text" value="new user"/>
Password:	<input type="password"/>
Password Confirm:	<input type="password"/>
<input type="button" value="Save"/>	

➤ User list
➤ Add New User ☰

User Name	Type	Operation
admin	Super Administrator	<input type="button" value="Modify"/>
1	User	<input type="button" value="Modify"/> <input type="button" value="Delete"/> <input type="button" value="Detail"/>
new user	User	<input type="button" value="Modify"/> <input type="button" value="Delete"/> <input type="button" value="Detail"/>

4.7.3 User authorities

The administrator may authorize the common user to play on demand or download files at any time. Click **[Detail]** button to view all the files stored in the server, and select and set the related play on demand / download authorities in the list.

➤ File List
☰

NO.	File Name	Size	Record Time	Description	Casting <input type="checkbox"/>	Download <input type="checkbox"/>
☏ Type:Unclassified						
1	20090923143007.asf	24M	2009-09-23 14:30:07		<input type="checkbox"/>	<input type="checkbox"/>
2	20090921172841-72.asf	28M	2009-09-23 14:26:47		<input checked="" type="checkbox"/>	<input checked="" type="checkbox"/>
3	20090921172841-71.asf	1035M	2009-09-23 13:04:12		<input type="checkbox"/>	<input type="checkbox"/>
4	20090921172841-70.asf	1035M	2009-09-23 11:41:32		<input checked="" type="checkbox"/>	<input checked="" type="checkbox"/>
5	20090921172841-69.asf	1032M	2009-09-23 10:52:20		<input checked="" type="checkbox"/>	<input checked="" type="checkbox"/>
6	20090921172841-68.asf	1031M	2009-09-23 10:13:08		<input checked="" type="checkbox"/>	<input checked="" type="checkbox"/>
7	20090921172841-67.asf	1031M	2009-09-23 09:33:55		<input checked="" type="checkbox"/>	<input checked="" type="checkbox"/>
8	20090921172841-66.asf	1031M	2009-09-23 08:54:42		<input checked="" type="checkbox"/>	<input checked="" type="checkbox"/>
9	20090921172841-65.asf	1031M	2009-09-23 08:15:01		<input checked="" type="checkbox"/>	<input checked="" type="checkbox"/>
10	20090921172841-64.asf	1031M	2009-09-23 07:34:47		<input checked="" type="checkbox"/>	<input checked="" type="checkbox"/>
11	20090921172841-63.asf	1031M	2009-09-23 06:54:22		<input checked="" type="checkbox"/>	<input checked="" type="checkbox"/>
12	20090921172841-62.asf	1031M	2009-09-23 06:13:24		<input checked="" type="checkbox"/>	<input checked="" type="checkbox"/>
13	20090921172841-61.asf	1031M	2009-09-23 05:33:02		<input checked="" type="checkbox"/>	<input checked="" type="checkbox"/>
14	20090921172841-60.asf	1031M	2009-09-23 04:52:26		<input checked="" type="checkbox"/>	<input checked="" type="checkbox"/>

4.7.4 Delete user

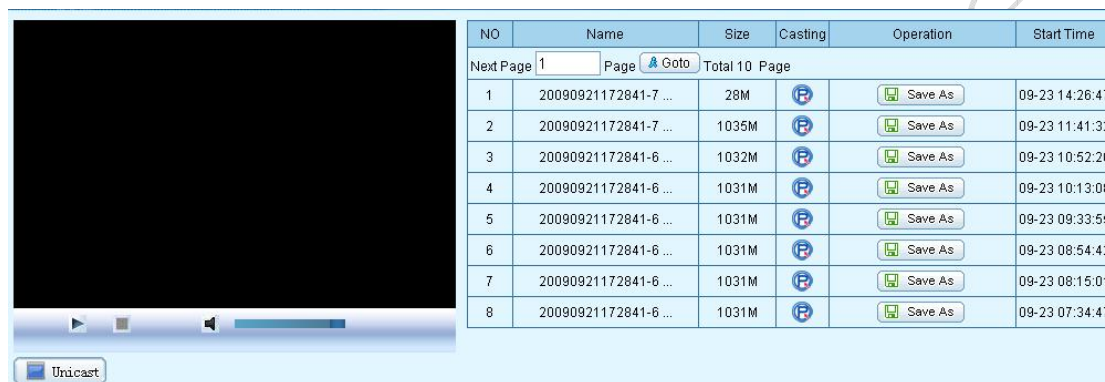
In the user list dialog box, click the corresponding user and select **[Delete]** button, and

then click **[OK]** in the prompted confirmation dialog box.

Note: The default super administrator “admin” user cannot be deleted.

4.7.5 Other user login

Common user can only receive unicast and multicast after logon (started by the administrator), as well as authorized file play on demand and download, as shown in the following figure:

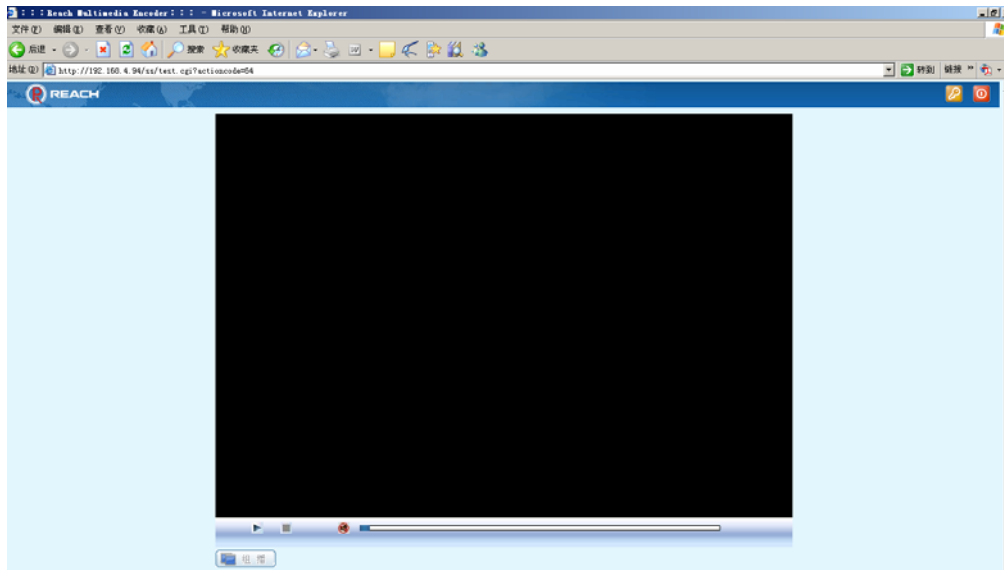


NO	Name	Size	Casting	Operation	Start Time
1	20090921172841-7 ...	28M		Save As	09-23 14:26:47
2	20090921172841-7 ...	1035M		Save As	09-23 11:41:32
3	20090921172841-6 ...	1032M		Save As	09-23 10:52:20
4	20090921172841-6 ...	1031M		Save As	09-23 10:13:08
5	20090921172841-6 ...	1031M		Save As	09-23 09:33:55
6	20090921172841-6 ...	1031M		Save As	09-23 08:54:42
7	20090921172841-6 ...	1031M		Save As	09-23 08:15:01
8	20090921172841-6 ...	1031M		Save As	09-23 07:34:47

4.8 Guest User



Enter WEB interface of the All-In-One Server. The User Name: **guest**, and no password. Click **[login]**.



Click [**Multicast**], and the real time multicast data image can be seen.

Note: Guest user can only receive multicast! And only after administrator turn on Multicast function can guest user receive it normally!