



Technical Specifications

System <ul style="list-style-type: none"> CPU: VVTK-1000 SoC Flash: 8MB RAM: 64MB Embedded OS: Linux 2.4 	Networking <ul style="list-style-type: none"> 10/100 Mbps Ethernet, RJ-45 Protocols: IPv4, TCP/IP, HTTP, HTTPS, UPnP, RTSP/RTP/RTCP, IGMP, SMTP, FTP, DHCP, NTP, DNS, DDNS, and PPPoE
Lens <ul style="list-style-type: none"> Focal length: f=4.1mm~73.8mm, auto iris, focus range: 290mm (wide), 800mm (tele) to infinity F-number: F1.4 (wide), F3.0 (tele) Embedded removable IR-cut filter for day & night function 	Alarm and Event Management <ul style="list-style-type: none"> Triple-window video for motion detection Four D/I and one D/O for external sensor and alarm Event notification using HTTP, SMTP, or FTP Local recording of MP4 file
Angle of View <ul style="list-style-type: none"> 2.8°~ 48° (horizontal) 	Security <ul style="list-style-type: none"> Multi-level user access with password protection IP address filtering HTTPS encrypted data transmission
Shutter Time <ul style="list-style-type: none"> 1/2 sec. to 1/10,000 sec. 	Users <ul style="list-style-type: none"> Camera live viewing for up to 10 clients
Image Sensor <ul style="list-style-type: none"> SONY 1/4" progressive scan CCD sensor in VGA resolution 	Dimension (including lens) <ul style="list-style-type: none"> Ø 200mm x 270mm (H)
Minimum Illumination <ul style="list-style-type: none"> 1.61 Lux (F1.4, 1/30s) 0.38 Lux (F1.4, 1/30s, without IR-cut filter) 	Weight (including lens) <ul style="list-style-type: none"> Net: 3,740g
Video <ul style="list-style-type: none"> Compression: MJPEG & MPEG-4 Streaming: <ul style="list-style-type: none"> Simultaneous dual-streaming MPEG-4 streaming over UDP, TCP, or HTTP MPEG-4 multicast streaming MJPEG streaming over HTTP Supports 3GPP mobile surveillance Frame rates: <ul style="list-style-type: none"> MPEG-4: Up to 30/25 fps at 640x480 MJPEG: Up to 30/25 fps at 640x480 	LED Indicator <ul style="list-style-type: none"> System power and status indicator System activity and network link indicator
Image Settings <ul style="list-style-type: none"> Adjustable image size, quality, and bit rate Time stamp and text caption overlay Flip & mirror Configurable white balance, brightness, sharpness, and exposure Automatic, manual or scheduled day/night mode Backlight compensation (BLC) 	Power <ul style="list-style-type: none"> 24V AC 2A 60Hz/50Hz Power consumption: Max 42W
Pan/Tilt/Zoom <ul style="list-style-type: none"> Pan range: 360° continuous rotation Tilt range: 0°~90° flip Pan speed: 0.1~300°/sec Tilt speed: 0.1~120°/sec Auto pan mode Auto patrol mode 	Approvals <ul style="list-style-type: none"> CE, LVD, FCC, VCCI, C-Tick
Audio <ul style="list-style-type: none"> Compression: <ul style="list-style-type: none"> GSM-AMR speech encoding, bit rate: 4.75 kbps to 12.2 kbps MPEG-4 AAC audio encoding, bit rate: 16 kbps to 128 kbps Interface: <ul style="list-style-type: none"> External microphone input Audio output Supports two-way audio by SIP protocol Supports audio mute 	Operating Environments <ul style="list-style-type: none"> Temperature: -20° ~ 60° C (-4° ~ 140°F) Humidity: 20%~80% RH
	Viewing System Requirements <ul style="list-style-type: none"> OS: Microsoft Windows 2000/XP/Vista Browser: Mozilla Firefox, Internet Explorer 6.x or above Cell phone: 3GPP player Real Player: 10.5 or above Quick Time: 6.5 or above
	Installation, Management, and Maintenance <ul style="list-style-type: none"> Installation Wizard 2 16-CH recording software Supports firmware upgrade
	Applications <ul style="list-style-type: none"> SDK available for application development and system integration

All specifications are subject to change without notice. Copyright © 2008 VIVOTEK INC. All rights reserved. P/N:011001100 Ver 3.0

Speed Dome Network Camera

SD7151

Day/Night Outdoor 18x Zoom Progressive Scan CCD



VIVOTEK SD7151, equipped with an 18x optical zoom lens, is a high performance day/night speed dome network camera suitable for professional surveillance applications. It is another significant addition to VIVOTEK's high-end network camera portfolio of progressive-series.

Adopting Sony 18x optical zoom lens plus progressive CCD sensor, this network camera allows you not only to have close-up images with exceptional detail from a long distance when enlarged but also get crystal-clear, razor-sharp images of fast-moving objects without jagged edges. With sophisticated pan/tilt mechanism, it provides fast, precise movement with continuous 360-degree pan and 90-degree tilt. You can easily control the lens position by a mouse or a joystick to track the object you are interested in and have up to 128 presets for patrolling.

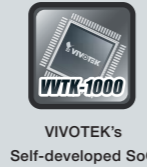
The day and night function makes this camera ideal for operating under diverse lighting conditions. When light conditions turns poor, the IR cut filter will be automatically removed to accept IR illumination. Meanwhile, the camera switches itself automatically from color to black and white, assuring optimal image quality at all times.

More advanced features including 3GPP mobile surveillance, two-way audio by SIP protocol, and digital I/O for external sensor and alarm make VIVOTEK SD7151 a full-featured speed dome. It is the best solution for various enterprise projects such as airports, highways, parking lots, and shopping malls, where high-level reliability and precision is always required.

Product Features

SD7151

- SONY Progressive Scan CCD Sensor in VGA Resolution
- 18x Zoom Lens
- Removable IR-cut Filter for Day & Night Function
- 360° Continuous Pan and 0°~90° Flip Tilt
- Vandal-proof and Weather-proof
- Real-time MPEG-4 and MJPEG Compression (Dual Codec)
- Supports Dual Streams Simultaneously
- 3GPP Mobile Surveillance
- Easy, Fast, Accurate PTZ Control by Joystick
- Two-way Audio by SIP Protocol
- Digital I/O for External Sensor and Alarm



Versatile Applications



Airports



Freeway

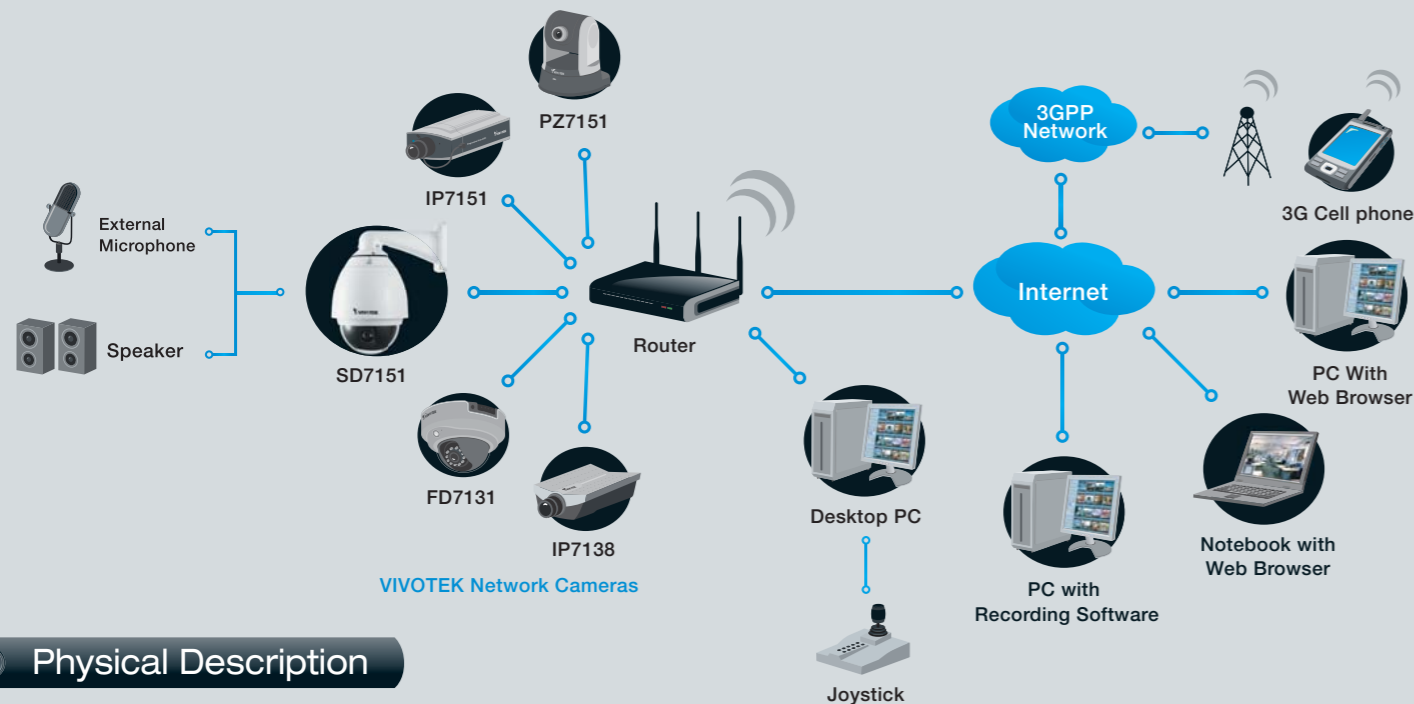


Parking lots

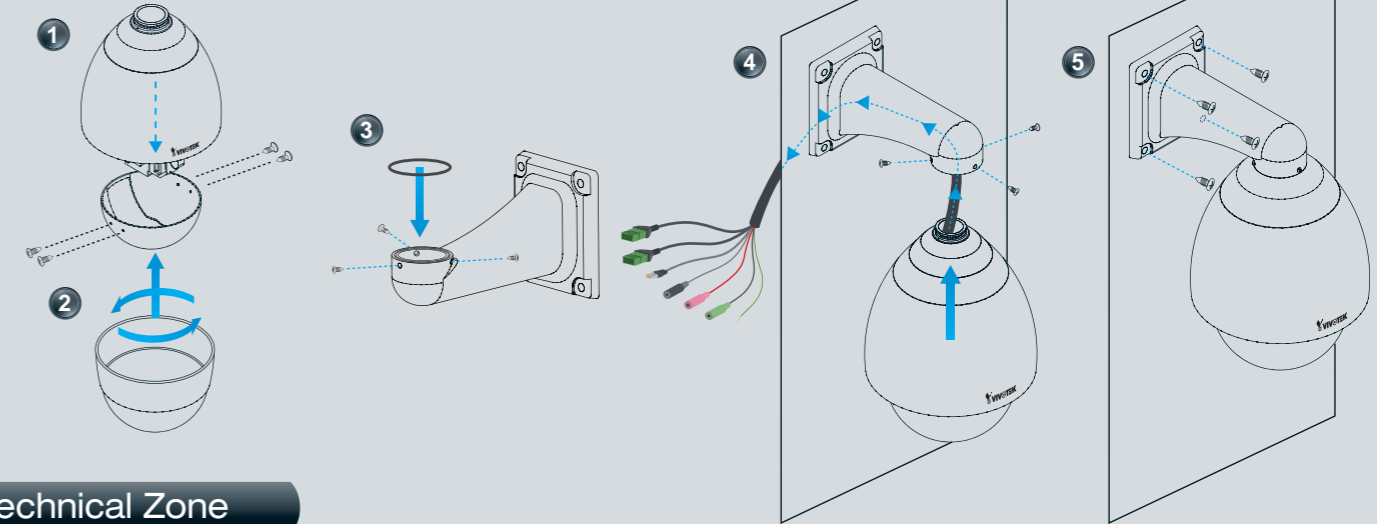


Shopping malls

System Overview



Easy Installation



Technical Zone



Progressive Scan CCD Sensor

Optimum solution for shooting high-speed moving objects

The progressive scan CCD sensor effectively offers an excellent solution for shooting high-speed moving objects. It can clearly capture images of moving objects that traditional interlaced-scan techniques could not achieve. Unlike interlaced-scan techniques, progressive scanning scans all the lines simultaneously so as to present razor-sharp, clear, and high-resolution snapshots.



18x Optical Zoom Lens

Providing unprecedented image quality

Utilizing Sony 18x optical zoom lens, VIVOTEK SD7151 allows you to have close-up images with exceptional detail and effectively extends your eyesight. You can easily and quickly zoom in on distant objects or any tiny target with unprecedented high quality even when enlarged.



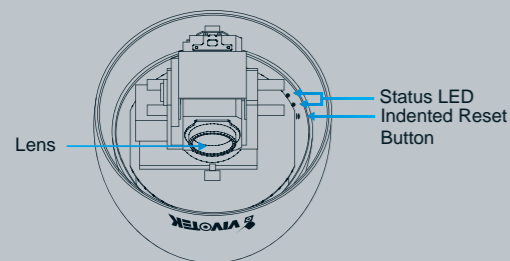
Day & Night Function

The best solution for 24-hour surveillance

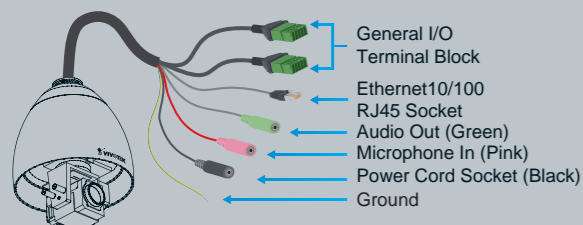
VIVOTEK SD7151 is equipped with a removable IR cut filter, which will automatically be removed at night time to bring the IR light into the sensor to maximize the low light sensitivity. The camera will switch automatically from color to black and white, assuring optimal image quality at all times.

Physical Description

Inner View



Connectors



Pan range: 360° Continuous Rotation
Tilt range: 0°~90° Flip

