



Technical Specifications

System <ul style="list-style-type: none"> CPU: VVTK-1000 SoC Flash: 8MB RAM: 64MB Embedded OS: Linux 2.4 	Networking <ul style="list-style-type: none"> 10/100 Mbps Ethernet, RJ-45 Protocols: IPv4, TCP/IP, HTTP, UPnP, RTSP/RTP/RTCP, IGMP, SMTP, FTP, DHCP, NTP, DNS, DDNS, and PPPoE
Lens <ul style="list-style-type: none"> Focal length: f=4.1mm to 73.8mm F-number: F1.4 (wide), F3.0 (tele) Iris: Auto/Manual (F1.4 to F22) Removable IR-cut filter: Auto/Schedule 18x zoom with VGA resolution 	Alarm and Event Management <ul style="list-style-type: none"> Triple-window video for motion detection One D/I and one D/O for external sensor and alarm Event notification using HTTP, SMTP, or FTP Local recording of MP4 file
Angle of View <ul style="list-style-type: none"> 48° ~ 2.8° (horizontal) 	Security <ul style="list-style-type: none"> Multi-level user access with password protection IP address filtering
Shutter Time <ul style="list-style-type: none"> 1/2 sec. to 1/10000 sec. 	Users <ul style="list-style-type: none"> Camera live viewing for up to 10 clients
Image Sensor <ul style="list-style-type: none"> SONY 1/4" progressive scan CCD sensor with VGA resolution 	Dimension (including lens) <ul style="list-style-type: none"> 78mm (W) x 147mm (D) x 85mm (H)
Minimum Illumination <ul style="list-style-type: none"> 1.61 Lux (F1.4, 1/30s) 0.38 Lux (F1.4, 1/30s, ICR ON) 	Weight (including lens) <ul style="list-style-type: none"> Net: 824g
Video <ul style="list-style-type: none"> Compression: MJPEG & MPEG-4 Streaming: <ul style="list-style-type: none"> Simultaneous dual-streaming MPEG-4 streaming over UDP, TCP, or HTTP MPEG-4 multicast streaming MJPEG streaming over HTTP Supports 3GPP mobile surveillance Resolutions: <ul style="list-style-type: none"> MJPEG & MPEG-4 video with resolution up to 640x480 (VGA) Frame rates: <ul style="list-style-type: none"> Up to 30fps at 176x144 Up to 30fps at 320x240 Up to 30fps at 640x480 	LED Indicator <ul style="list-style-type: none"> System power and status indicator System activity and network link indicator
Image Settings <ul style="list-style-type: none"> Adjustable image size, quality, and bit rate Time stamp and text caption overlay Flip & mirror Configurable brightness and sharpness AGC, AWB, AES 	Power <ul style="list-style-type: none"> 12V DC 24V AC 802.3af compliant Power over Ethernet
Audio <ul style="list-style-type: none"> Compression: <ul style="list-style-type: none"> GSM-AMR speech compression, bit rate: 4.75 kbps ~12.2 kbps MPEG-4 AAC audio encoding, bit rate: 16 kbps ~128 kbps Interface: <ul style="list-style-type: none"> Built-in microphone External microphone input Supports two-way audio by SIP protocol Supports audio mute 	Approvals <ul style="list-style-type: none"> CE, LVD, FCC, VCCI, C-Tick
	Operating Environments <ul style="list-style-type: none"> Temperature: 0°~50° C (32°~122° F) Humidity: 20%~80%
	Viewing System Requirements <ul style="list-style-type: none"> OS: Microsoft Windows 2000/XP/Vista Browser: Mozilla Firefox, Internet Explorer 6.x or above Cell phone: 3GPP player Real Player: 10.5 or above Quick Time: 6.5 or above Packet Video Player: 3.0 or above
	Installation, Management, and Maintenance <ul style="list-style-type: none"> Installation Wizard 2 16-CH recording software Supports firmware upgrade
	Applications <ul style="list-style-type: none"> SDK available for application development and system integration

Network Camera IZ7151

18x Zoom Progressive Scan CCD



VIVOTEK IZ7151, incorporates a fully integrated Sony 18x optical zoom lens and progressive scan CCD sensor, is an all-in-one network camera for 24-hour day and night surveillance. With the built-in 18x optical zoom, this camera can flexibly zoom in on small or distant objects and remotely monitor warehouses, construction sites, parking lots, office or apartment buildings and more - with exceptional accuracy and clarity.

Featuring the day/night function, the IR-cut filter is able to be removed while lighting darkens and automatically turns the mode of color (day time/bright lighting) into monochrome (night time/dark or low lighting), down to 0.38 lux. It also comes with a RS-485 interface for scanners or pan/tilts driver connection, which is designed for a cost-effective alternative with pan/tilt/zoom functions as a professional speed dome.

Additionally, this camera is fully loaded with many sophisticated features such as 3GPP mobile surveillance, Power over Ethernet, and SIP two-way audio, free-bundled 16-Ch recording software etc., allowing you to build up a reliable, future-proof IP surveillance system with ease. No matter how wide range your applications would be, just have a closer, crystal clear view with VIVOTEK IZ7151 from anywhere over the network.

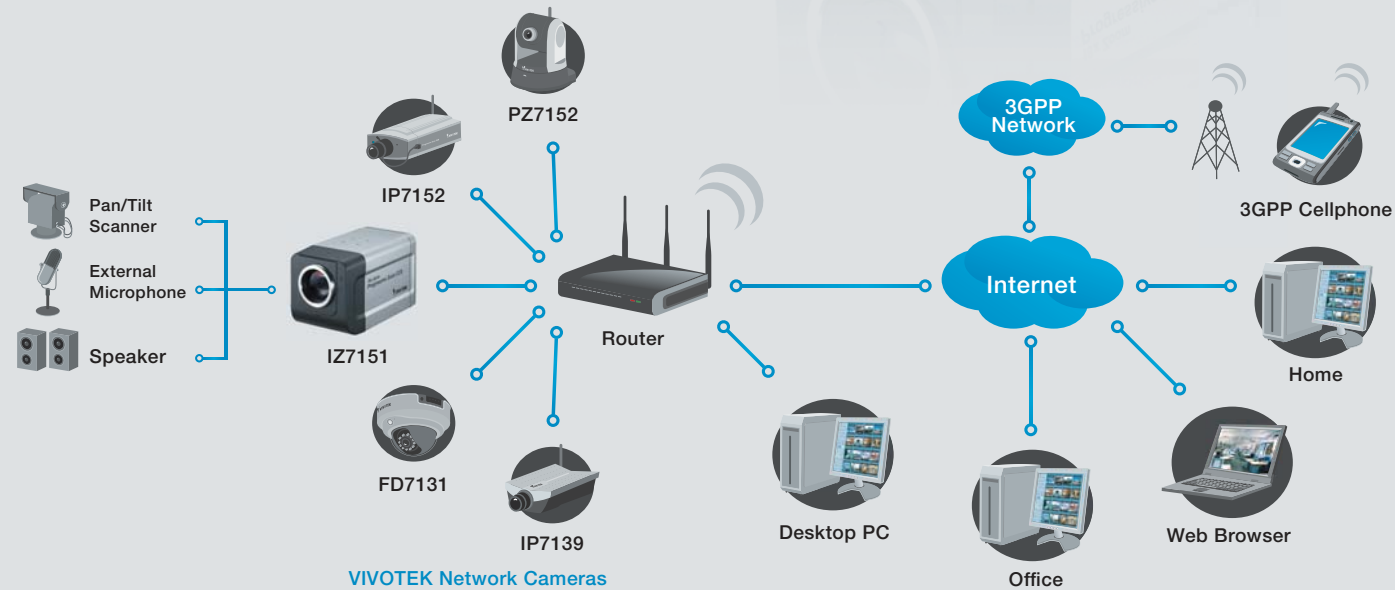
Product Features

- 18x Zoom Progressive Scan CCD Module with VGA Resolution
- Removable IR-cut Filter for Day & Night Function
- Real-time MPEG-4 and MJPEG Compression (Dual Codec)
- Supports Dual Streams Simultaneously
- Supports 3GPP Mobile Surveillance
- Built-in 802.3af Compliant Power over Ethernet (PoE)
- Supports Two-way Audio by SIP Protocol
- RS-485 Interface for Scanners, Pan/Tilts
- Digital I/O for External Sensor and Alarm
- Free-bundled 16-CH Recording Software



VIVOTEK's
Self-developed SoC

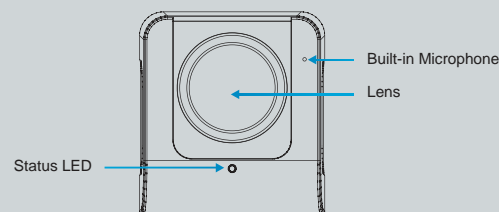
System Overview



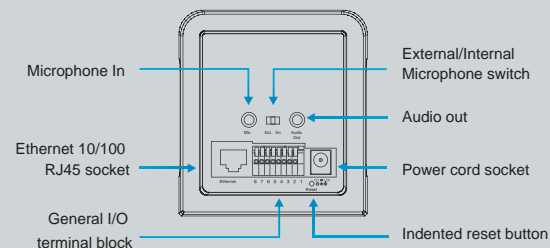
VIVOTEK Network Cameras

System Overview

Front View



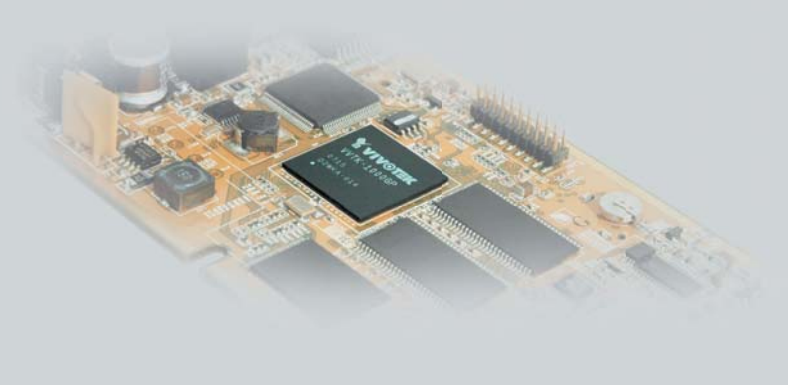
Rear View



VVTK-1000

VIVOTEK's Self-developed SoC

VIVOTEK's self-developed SoC enhances the implementation of more powerful surveillance functions, greater transmission efficiency, and guarantee the highest quality in real-time audio-video transmission.



Versatile Applications



Warehouses



Factories

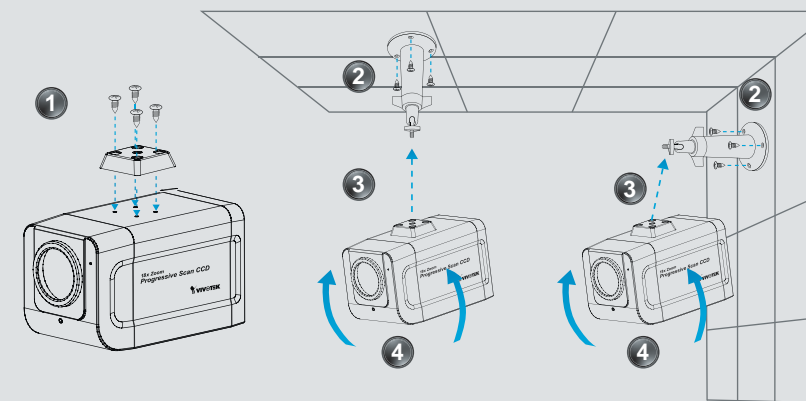


Parking lots



Offices

Easy Installation



Accessories



Technical Zone



Progressive Scan CCD Sensor

Optimum solution for shooting high-speed moving objects

The progressive scan CCD sensor effectively offers an excellent solution for shooting high-speed moving objects. It can clearly capture images of moving objects that traditional interlaced-scan techniques could not achieve. Unlike interlaced-scan techniques, progressive scanning scans all the lines simultaneously so as to present razor-sharp, clear, and high-resolution snapshots in all circumstances.



18x Optical Zoom Lens

Providing unprecedented image quality

Utilizing Sony 18x optical zoom lens, VIVOTEK IZ7151 allows you to have close-up images with exceptional detail and effectively extends your eyesight. You can easily and quickly zoom in on distant objects or any tiny target with unprecedented high quality even when enlarged.



Power over Ethernet

Allowing power and signals to be transmitted over only one Ethernet cable

With 802.af PoE support, VIVOTEK IZ7151 can be powered through the original network-cabling infrastructure, thus cutting costs and cablings to the overall installation.