

5.0 Megapixels

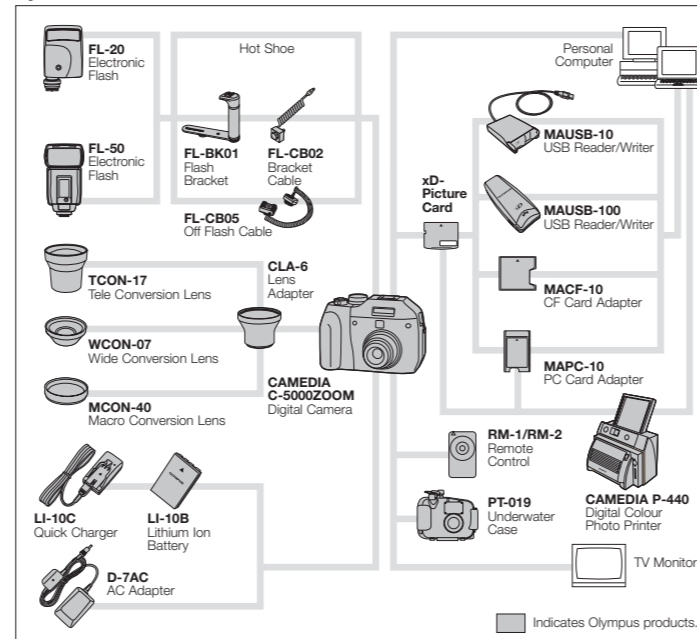


Image Taken with the CAMEDIA C-5000ZOOM (f6.3, 1/125 sec., 2560 x 1920 Pixels/SHQ)

5.0 Megapixel Image Quality

The CAMEDIA C-5000ZOOM is equipped with a powerful CCD featuring an astounding 5.0 megapixels. This tremendous image quality guarantees strong imagery and extraordinary clarity. Image size can be selected from 2560 x 1920 pixels to 640 x 480 pixels. Thanks to Olympus-exclusive TruePic Processing, even low-resolution images come out beautifully.

System Chart



Optional Accessories

Flash Accessories:

- FL-20 Electronic Flash**
Compact and high-power flash with GN 20.
- FL-50 Electronic Flash**
High-power flash with GN 50 for TELE, 28 for WIDE.
- FL-BK01 Flash Bracket**
For connecting the FL-20/FL-50 Electronic Flash to the camera.
- FL-CB02 Bracket Cable**
For connecting the FL-BK01 Flash Bracket to the camera's hot shoe.
- FL-CB05 Off Flash Cable**
For connecting the FL-20/FL-50 Electronic Flash to the camera's hot shoe.

Conversion Lenses:

- TCON-17 Tele Conversion Lens**
Magnifies the focal length by 1.7 times.
- WCON-07 Wide Conversion Lens**
Shortens the focal length by 0.7 times.
- MCON-40 Macro Conversion Lens**
Enables shooting as close to the subject as 12cm in Macro mode or 1.4cm in Super Macro mode.
- CLA-6 Lens Adapter**
Required for attaching TCON-17, WCON-07, or MCON-40 to the camera.

Power Supply:

- LI-10B Lithium Ion Battery**
Rechargeable lithium ion battery.
- LI-10C Quick Charger**
Battery charger for LI-10B Lithium Ion Battery.
- D-7AC AC Adapter**
For extended use of the camera.

Memory Card & Related Products:

- xD-Picture Card**
Ultra-compact and removable memory card for storage convenience. 16MB - 512MB
- MAUSB-10 USB Reader/Writer**
For high speed data transfer from an xD-Picture Card/SmartMedia card to a PC/Macintosh with a USB port.
- MAUSB-100 USB Reader/Writer**
For high speed data transfer from an xD-Picture Card to a PC/Macintosh with a USB port.
- MACF-10 CF Card Adapter**
For using an xD-Picture Card with digital cameras, multimedia devices, or computers with a CF card slot.
- MAPC-10 PC Card Adapter**
For easy and fast data transfer from an xD-Picture Card/SmartMedia card to a PC/Macintosh with a PC card slot.
- RM-1/RM-2 Remote Control**
For using a variety of functions from a distance.
- PT-019 Underwater Case**
Protective case for underwater photography at up to depths of 40m. (Camera sold separately).

CAMEDIA C-5000ZOOM Digital Camera Specifications

Recording system	Still image : TIFF (non-compressed) or JPEG with DCF (Design rule for Camera File system). Exit 2.2, PRINT Image Matching II, DPOF (Digital Print Order Format) support. Motion JPEG image : QuickTime Motion JPEG support
Memory	xD-Picture Card (16 - 512MB)
No. of effective pixels	5.0 megapixels
Image pickup element	1/1.8 inch CCD solid-state image pickup device, total 5.4 megapixels
Recording image sizes & approx. no. of storable frames (When using a 32MB xD-Picture Card)	2560x1920 pixels — TIFF : 2, SHQ : 8, HQ : 26 2272x1704 pixels — TIFF : 2, SQ1 (High) : 11, SQ1 (Normal) : 33 2048x1536 pixels — TIFF : 3, SQ1 (High) : 13, SQ1 (Normal) : 40 1600x1200 pixels — TIFF : 5, SQ1 (High) : 22, SQ1 (Normal) : 66 1280x960 pixels — TIFF : 8, SQ2 (High) : 35, SQ2 (Normal) : 104 1024x768 pixels — TIFF : 12, SQ2 (High) : 55, SQ2 (Normal) : 153 640x480 pixels — TIFF : 30, SQ2 (High) : 142, SQ2 (Normal) : 398
TIFF: non-compressed SHQ: Super High Quality HQ: High Quality SQ1: Standard Quality-1 SQ2: Standard Quality-2	
Lens	Olympus lens 7.8 - 23.4mm, F2.8 - 4.8, 7 elements in 6 groups (equivalent to 38 - 114mm on a 35mm camera)
Digital Zoom mode	1 - 4X (up to 12X with 3X optical zoom)
Photometric system	Digital ESP light metering, Spot light metering
Sensitivity	Auto, and settings equivalent to approx. ISO50, 80, 160, 320
Exposure control	Programmed auto, Aperture-priority and Shutter-priority exposure modes Aperture-priority : Wide : F2.8 - 8 / Tele : F4.8 - 8 Shutter-priority : 1 - 1/1,000 sec. (used with mechanical shutter) Manual exposure mode : 16 - 1/1,000 sec. Scene Programmes : Portrait, Sports, Landscape Portrait, Landscape, Night Scene, Self Portrait Motion JPEG Image mode : 1/30 - 1/8,000 sec.
Focusing	TTL contrast detection system autofocus : Normal mode : 0.5m - ∞ Macro mode : 0.2 - 0.5m Super Macro Mode : up to 0.04m (focal length fixed) Manual focus : 0.2m - ∞
White balance	Full auto TTL, One-Touch, Preset (daylight, overcast, tungsten, 3 types of fluorescent light)
Sequence mode	Up to 5 pictures at 1.7 frames per second in HQ mode (excluding TIFF and Noise Reduction)
Motion JPEG image recording	Total recording time using a 32MB xD-Picture Card: Approx. 114 sec. in HQ mode (320 x 240 pixels) Approx. 453 sec. in SQ mode (160 x 120 pixels)
Special functions	Black & White, Sepia, 2-In-1 Images, Panorama (available with an Olympus version of the xD-Picture Card and CAMEDIA Master software)
Image editing	Resize, Rotation
Viewfinder	Optical real-image viewfinder, LCD monitor
LCD monitor	4.5cm TFT colour LCD display, approx. 134,000 pixels
Charging time for flash	Approx. 6 sec. (at normal temperature with new batteries)
Flash working range	Wide : Approx. 0.2 - 3.8m/Tele : Approx. 0.3 - 2.2m
Flash modes	Auto (automatic flash activation in low light and backlight), Red-Eye Reduction, Fill-In (forced activation), Off (no flash), 1st/2nd Curtain Slow Synchronisation, 1st Curtain Slow Synchronisation + Red-Eye Reduction Flash intensity control : available in 1/3EV stops within ±2EV
Selftimer	Electronic selftimer with 12-sec. delay
Outer connectors	DC-IN jack, USB connector (Storage-Class), video output connector
Calendar system	Up to 2099, recorded with picture data simultaneously
Power supply	Exclusive lithium ion battery, optional AC adapter
Dimensions	105 (W) x 74 (H) x 46 (D) mm (excluding protruding parts)
Weight	240g (without batteries/card)

Olympus CAMEDIA Master Pro Software

CAMEDIA Master Pro

- The easy-to-use software which accompanies your digital photography experience:
- Browse your images, create slideshows, convert slideshows to screensavers or movies, create HTML albums, edit your movies, rotate movies ...
 - All this and more with a user interface that minimises mistakes.
 - For Windows and Macintosh

-If you already own CAMEDIA Master 4.0 (delivered with every CAMEDIA digital camera), upgrade your copy of CAMEDIA Master online at <http://www.camedia-shop.com>.



- QuickTime is a trademark of Apple Computer, Inc.
- All other company and product names are registered trademarks and/or trademarks of their respective owners.
- The pictures in this catalogue of the LCD and PC monitors are simulated.
- Specifications and appearances are subject to change without any notice or obligation on the part of the manufacturer.

OLYMPUS

Your Vision, Our Future

Zoom Digital Compact Camera

CAMEDIA

C-5000 ZOOM

NEW

Feed Your Imagination 5.0 Megapixels & 3X Optical Zoom



CAMEDIA C-5000ZOOM

Where Creativity And
High Performance Meet



The world is full of colours, shapes, and images.

Capture more of it with the CAMEDIA C-5000ZOOM's 5.0 megapixel image quality, powerful zoom, and wide selection of versatile, high-quality functions.

With an array of shooting modes and ultra-fine settings for exposure, white balance, contrast, flash, and more, plus optional external flashes and conversion lenses, you'll have all the tools you need to fire your imagination and capture the true beauty of the world around you.

Sharp Zoom Lens

3X Optical Zoom

A sharp all-glass F2.8-4.8, 7.8-23.4mm*, 3X optical zoom lens with accurate focusing ensures that you capture sharp photos. With 4X Digital Zoom, up to 12X telephoto shooting** is possible.

* Equivalent to 38-114mm on a 35mm camera.
** Equivalent to approx. 456mm on a 35mm camera. Images may be grainy in Digital Zoom.



7.8mm (38mm)



15.0mm (73mm)



23.4mm (114mm)



23.4mm with 4X Digital Zoom (456mm) () on a 35mm camera

Several Situation Options

A Variety Of Shooting Modes To Satisfy Both Experts And Beginners

In addition to full auto, other shooting modes include P/A/S/M exposure, versatile Scene Programme, My Mode, and Motion JPEG. You can quickly switch among shooting modes with the Mode Dial.

Full Auto: The camera shoots beautiful pictures automatically. All you have to do is push the shutter button.

P/A/S/M: Programme AE, Aperture Priority AE, Shutter Priority AE, and Manual let you choose how exposure is controlled, giving experts the mastery they need.

Scene Programme: Portrait, Sports, Landscape Portrait, Landscape, Night Scene, and Self Portrait modes let you shoot superb pictures customised for the situation.



A Aperture Priority AE



S Shutter Priority AE



M Manual Exposure



P Portrait



S Sports



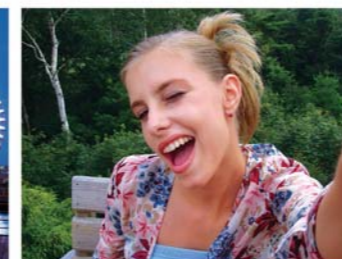
LP Landscape Portrait



L Landscape



NS Night Scene



SP Self Portrait

● Aperture Priority AE

You set the aperture manually, while the camera sets the shutter speed automatically. This lets you change the focusing range to fit your needs.

● Portrait

Portrait-style images of people against a blurred background. Skin tones are reproduced clearly and naturally.

● Landscape

Sharp pictures of sweeping landscapes. Set the mode to Landscape to capture the beauty of nature in sharp detail.

● Shutter Priority AE

You set the shutter speed manually, while the camera sets the aperture automatically. This lets you freeze a quick moment or have time flow through your picture.

● Sports

Action moments without blur, using a high-speed shutter.

● Night Scene

A slower shutter speed than normal clearly captures night-time scenes. (A tripod is recommended.)

● Manual Exposure

You set both the aperture and shutter speed manually, giving you total control of exposure.

● Landscape Portrait

Both the foreground and background are beautifully in focus. Good for shooting people in front of landscapes.

● Self Portrait

Quality photos of yourself while holding the camera. Focus locks on you and complexions appear realistic.

My Mode: You can create a personal combination of settings for faster shooting.
Motion JPEG: With a 32MB xD-Picture Card, movie recording for a total of approx. 114 seconds in HQ mode (320 x 240 pixels) or 453 seconds in SQ mode (160 x 120 pixels) is possible.



Flexible Shooting

Accurate Focusing

TTL contrast detection system autofocus allows quick and accurate focusing, while manual focus lets you focus on whatever you want to. Spot autofocus to focus on the centre of the viewfinder is available. You can also conveniently shift the AF target mark on the viewfinder 2 positions up, down, right, or left from centre (9 positions overall) without moving the camera.



AF Target Mark Shift

Macro & Super Macro Modes

You can shoot with the camera as close to the subject as 20cm in Macro mode, or even 4cm in Super Macro mode. This allows incredible close-ups of flowers, insects, and more.



With Super Macro Mode

Exposure Compensation & Auto Bracketing

±2EV compensation in 1/3EV stops is possible. With auto exposure bracketing*, images can be taken sequentially with 3 or 5 different exposures in 1/3, 2/3, 1EV stops within ±2EV. *Excluding TIFF and Noise Reduction



Without Exposure Compensation With Exposure Compensation (+1)

Multiple White Balance Settings

Auto, Preset, and One-Touch white balance are available. Full Auto TTL automatically takes shots with the appropriate white balance. Preset lets you set the white balance for daylight, overcast, tungsten, or 3 types of fluorescent light. One-Touch lets you create even more precise white balance by pointing the camera at a nearby white object. You can also make fine adjustments between -7 (red) and +7 (blue).



Tungsten Setting under Tungsten Light Daylight Setting under Tungsten Light

Built-In Flash & Hot Shoe For External Flashes

The Intelligent-Variable Power Flash is built-in, and includes Auto, Red-Eye Reduction, Fill-In, Flash Off, 1st / 2nd Curtain Slow Synchronisation, and Slow Synchronisation + Red-Eye Reduction. Flash intensity control is available in 1/3EV stops within ±2EV. The camera is equipped with a hot shoe for connecting an external flash. The powerful optional FL-20 or FL-50 Electronic Flash gives you even more control over flash output.

Optional Conversion Lenses To Expand Your Shooting Options

The TCON-17 Tele Conversion Lens* lets you enlarge objects in the distance, while the WCON-07 Wide Conversion Lens* lets you fit more into your picture through a wider angle of view. For shooting minutely detailed close-ups, the MCON-40 Macro Conversion lens* is available.

* The optional CLA-6 Lens Adapter is required for attachment.



Optional Conversion Lenses and External Flashes

Other Smart Functions

2-In-1 Images

You can combine a shot with the one taken right after for interesting and useful composite photos.



1st Shot 2nd Shot Combined Picture

xD-Picture Card & Panorama Function

Images are saved to an xD-Picture Card, up to a huge 512MB in capacity. This ultra-compact card is convenient to carry and store. By using Olympus versions of this card, you can turn pictures taken with this camera into panoramas with the included utility software (CAMEDIA Master). A 32MB xD-Picture Card is included.



xD-Picture Card Panorama Picture

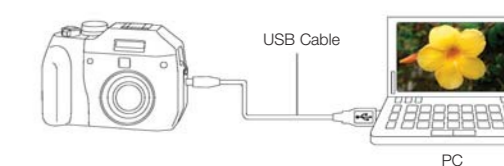
Viewfinder & LCD Monitor

With the optical real-image zoom viewfinder, composing and shooting can be done quickly. You can frame images easily and check them immediately on the clear and bright 100% field-of-view LCD monitor. You can also play back images by simply pressing the Quick View button, without having to change to playback mode.



USB AutoConnect

Simply connect the included USB cable from the camera to your PC, then download your images. You can also transfer images using the optional USB Reader/Writer, PC card adapter, or CompactFlash card adapter.



And More ...

- Auto & Preset Sensitivity Settings (ISO50, 80, 160, 320)
- Digital ESP (Electro-Selective Pattern) & Spot Light Metering
- Quick Sequence Shooting
- Sharpness, Contrast, & Saturation Settings
- Noise Reduction For Long Exposure
- Picture Effects: Black & White, Sepia (Excluding TIFF)
- Image Editing: Resize, Rotation
- RM-2 Remote Control Included
- Video Cable Included For TV Display
- Lithium Ion Battery & Charger Included
- Menu Language Options: English, French, German, Spanish