

## SPECIFICATIONS

<b>No. of effective pixels</b>	5.0 million
<b>CCD</b>	1/1.8-type interline primary-colour CCD with a total of 5.3 million (2668 x 1970) pixels
<b>Lens</b>	7.8 – 23.4 mm (35 mm equivalent: 38 – 114 mm), f/2.8 – f/4.7; 8 elements in 7 groups
<b>Recording media</b>	SD (Secure Digital) Memory Card / MultiMediaCard
<b>File format</b>	JPEG, TIFF, Motion JPEG (MOV): with Audio, DCF1.0, DPOF
<b>No. of recorded pixels</b>	2560 x 1920, 2048 x 1536, 1600 x 1200, 1280 x 960*, 640 x 480 * Only in UHS continuous-advance mode
<b>Storage capacity</b> (approx. no. of frames* using 64 MB SD card)	(1600 x 1200) Economy: 203, Standard: 117, Fine: 61, Super Fine: 10, Movie recording: (320 x 240) 3 minutes 2 seconds / (160 x 120) 12 minutes 9 seconds Audio recording: 2 hours 12 minutes 15 seconds * The actual number of images may vary depending upon the subject and the media used.
<b>Autofocus system</b>	Video AF
<b>Autofocus area</b>	Wide focus area (Area AF), Spot focus area with Focus Area Selection
<b>Focus modes</b>	Autofocus: Subject Tracking AF, Single-shot AF, Full-time AF (available in AF mode), Manual focus
<b>Focusing range</b>	Wide / Telephoto: 45 cm to infinity (from front of the lens) Macro: 14.5 cm to 54.5 cm (from front of the lens)
<b>Exposure mode</b>	Programmed AE, Aperture priority, Shutter priority, Manual
<b>Digital Subject Program Selection</b>	Automatic: Portrait, Sports action, Landscape, Sunset, Night portrait Manual: same as the above, plus Macro
<b>Exposure bracketing</b>	1.0 / 0.5 / 0.3 Ev increments; No. of bracket: 3 frames
<b>Metering</b>	Multi-segment (256 segments), Spot, Centre-weighted
<b>Camera sensitivity</b>	Auto and 64 / 100 / 200 / 400, ISO equivalent
<b>Self-timer</b>	Approx. 10 seconds delay
<b>Remote Control</b>	IR Remote Control RC-3
<b>White-balance control</b>	Automatic, Preset (Daylight, Tungsten, Fluorescent, Cloudy), Custom
<b>Flash mode</b>	Autoflash, Autoflash with red-eye reduction, Fill-flash, Flash cancel.
<b>A/D conversion</b>	12 bits
<b>LCD monitor</b>	3.8 cm (1.5 inch) TFT colour, with total 110,000 (approx.) pixels equivalent
<b>Noise Reduction</b>	User selectable
<b>Printing output control</b>	Exif Print, PRINT Image Matching II
<b>PC interface</b>	USB ver. 1.1, Video output PAL / NTSC (selected on the camera)
<b>Battery</b>	One CR-V3 lithium-ion battery or two AA Ni-MH batteries
<b>Battery performance</b> (Minolta measurement)	Continuous playback time: approx. 270 minutes with CR-V3 battery, approx. 140 minutes with Ni-MH battery (1700mAh)
<b>External power source</b>	3V DC (with specified AC adapter)
<b>Dimensions (WxHxD)</b>	111.0 x 52.5 x 32.5 mm
<b>Weight</b>	Approx. 185 g (without batteries and recording media)
<b>Standard accessories</b>	Battery (CR-V3), Hand Strap (HS-DG100), AV Cable (AVC-200), USB Cable (USB-500), SD Memory Card (64 MB), DIMAGE Software CD-ROM

Specifications and accessories are based on the information available at the time of printing, and are subject to change without notice. For the latest information, please visit: [www.minoltaeurope.com](http://www.minoltaeurope.com)  
Availability of accessories depends on areas.

## Compatible Computers

● IBM PC / AT compatible computers with preinstalled Windows XP, Windows Me, Windows 2000 Professional, Windows 98\*, or Windows 98 Second Edition\* and with a built-in USB port as standard interface. ● Apple Macintosh computers with Mac OS 8.6\*\*—9.2.2 or Mac OS X v.10.1.3—10.1.5 and v.10.2.1, with a built-in USB port as standard interface.

\* Users of Windows 98 and Windows 98 SE must install dedicated driver software supplied with the product.

\*\* Users of Mac OS 8.6 must download from the Internet and install "USB Mass Storage Support 1.3.5" offered by Apple Computer Inc.

More compatibility information (in English/French/German) at [www.minoltaeurope.com/pe/digital/languages\\_stage.html](http://www.minoltaeurope.com/pe/digital/languages_stage.html)

### Notes:

Computers and operating systems must be guaranteed by their manufactures to support USB interface. For details, please contact the manufacturer. Problems may be encountered depending on what other USB devices are being used in parallel with this product. Only a built-in USB port is supported. Problems may be encountered when the camera is connected to a USB hub. Normal operation may not occur even if all the system requirements are met.

- Minolta, DIMAGE and CxProcess are trademarks or registered trademarks of Minolta Co., Ltd.
- All other brand and product names are trademarks or registered trademarks of their respective owners.

Minolta Co., Ltd.	3-13, 2-Chome, Azuchi-Machi, Chuo-ku, Osaka 541-8556, Japan
Minolta Europe GmbH	Minollaring 11, D-30855 Langenhagen, Germany
Minolta (UK) Ltd. (Photo Operations)	Rooksley Park, Precedent Drive, Rooksley, Milton Keynes, MK13 8HF, England
Photopak Sales	241 Western Industrial Estate, Naas Road, Dublin 12, Ireland
Minolta Portugal Limitada	Av. do Brasil 33-A, P-1700 Lisboa, Portugal

Minolta homepage address: [www.dimage.minolta.com](http://www.dimage.minolta.com) [www.minoltaeurope.com](http://www.minoltaeurope.com)

*This brochure is printed with soy ink for environmental preservation.*

© 2002 Minolta Co., Ltd. 9242-4926-01 M0902 (ME-E)-A1 Printed in Japan

# MINOLTA

The essentials of imaging

[www.minolta.com](http://www.minolta.com)

## DIMAGE F300

5 Megapixels in a Stylish, Compact Body



## 5 MEGAPIXELS

[www.dimage.minolta.com](http://www.dimage.minolta.com)



## Stunning Quality with Unmatched Ease



- Superior quality 5.0 megapixel images
- Minolta's innovative Area AF with Subject Tracking AF to keep your shots in focus
- Accurate exposures made easy by Automatic Digital Subject Program Selection
- Seamless 12X zoom (3X optical & 4X digital)
- 32MB buffer memory for fast, responsive operation



Try the Innovative Approach, Where Sharpness  
Stays Constant



## 5 M E G A P I X E L S

Take it easy. Or take full creative control. The DiMAGE F300 lets you do either, in exhilarating 5.0 megapixel quality. Innovative features ensure sharp shots at the touch of a button, even with moving subjects, and optimum exposure as well. Operation is comfortably fast. And as for genuine creativity, you get a full palette of controls to experiment with. All in a slim, sleek body that's easy to carry.

**DiMAGE F300**

# Capture High-Resolution Images with Superior Colour Quality



## ■ 5.0 megapixel resolution

Turn your fabulous shots into high quality enlargements. With an effective resolution of 5.0 megapixels, the DiMAGE F300 produces detail rich images that look great as large-sized printouts (at 150 dpi, approx. 43 x 32 cm). A primary colour filter ensures optimum colour fidelity.

## ■ Premium Minolta GT Lens (38 – 114mm\*)

Minolta's acclaimed optical expertise is another key to high quality. The GT Lens maximises the performance of the camera's CCD, while suppressing colour aberration and image distortion. Only lenses that pass the strictest quality standards earn the GT Lens designation, and are included in cameras developed under the "Superior Image Quality" concept.

\* 35mm film camera equivalent

## ■ Clearer colours from Minolta CxProcess™

Clear, natural colours come from this exclusive image processing technology, which balances several factors to replicate how a scene appears to the human eye.

## ■ 12-bit A/D conversion for more colours

For extremely smooth gradations and fine shadow area detail, the DiMAGE F300 features 12-bit A/D conversion, a process that generates a range of over 68 billion hues.

## ■ Great results through noise reduction

Capture great shots at slow shutter speeds or when shooting a brightly-lit scene, such as the sky. Noise can sometimes be a problem with digital cameras, but not with the DiMAGE F300.



# Far More Innovative, Far More Intelligent



## Area AF



### ■ Area AF with Subject Tracking AF

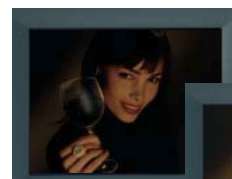
Thanks to this unique Minolta technology, it couldn't be any easier to capture a sharp, in focus image. Area AF has an extra wide focusing area with five focusing blocks, so you can just point and shoot—no focus lock is required. And you don't have to worry if your subject is moving, either. Subject Tracking AF follows your subject within the autofocus area and activates the right focusing block to keep it in focus.

### ■ Easier shooting at night or in the dark

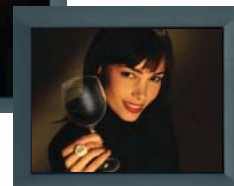
Low-light shooting is remarkably hassle free. For still images, colours in the LCD monitor will automatically get brighter, allowing you to frame your shot more easily. And during movie capture, sensitivity is automatically boosted so you can recognise your subject in the movie.

### ■ Automatic Digital Subject Program Selection

Let the DiMAGE F300 take care of exposure settings. Automatic Digital Subject Program Selection will dynamically change the exposure mode to match the scene you're shooting. The active mode is displayed for easy confirmation: portrait, night portrait, landscape, sunset, or sports action. Macro mode (manual setting) is also provided.



Conventional model



DiMAGE F300



Macro



Sunset



Portrait



Sports

# Stress Free Operation with Capture, Playback and More



## Zoom

Optical zoom



Digital zoom



### ■ Seamless 12X zoom (3X optical & 4X digital)

An expansive zoom range gives you extra flexibility with shot composition. The 3X optical zoom shifts seamlessly into digital zoom, in 0.1X increments for precise control.

### ■ XR (Extended Recording) movies & audio files

Capture mini movies with sound (up to 20 minutes long), or record up to 3 hours\* of audio only. You can also record short audio files and add audio captions to captured images.

\* Requires 128MB SD Memory Card. On rare occasions, some memory cards may not record to full capacity due to their writing speed.

### ■ 32MB buffer memory for smooth shooting

A large buffer memory ensures quick response, so you can take successive shots with hardly any wait. Playback is extremely fast as well.

### ■ Fluid playback of captured images

Blaze through the images on your memory card in 0.2 second intervals, regardless of their resolution.

### ■ UHS continuous shooting (1.3 megapixels)

When speed is essential, shift to Ultra High Speed mode to capture 11 frames per second.

### ■ Other convenient functions

E-mail Copy, a function that resizes captured images for delivery as e-mail attachments • Flash compensation mode • Customisable shutter sound • User selectable control sounds, such as the shutter click of a Minolta SLR or the nostalgic Minolta CLE • File formats: Exif 2.2, TIFF, Motion JPEG (MOV) with audio • Print output control: PRINT Image Matching, Exif Print • Self timer (10 seconds) • USB interface • SD Memory Card and MultiMediaCard compatibility • DiMAGE Viewer utility software for easy image editing



## Movie

# Explore the Possibilities of Creative Digital Imaging



## ■ Digital Effects Control (DEC)

Use DEC to create images with the special look you have in mind. Contrast, colour saturation, and exposure compensation can be altered prior to image capture and these changes can be previewed on the LCD monitor.

## ■ Adjustable white balance

Five white balance settings are provided: auto, daylight, cloudy, tungsten and fluorescent. White balance can also be customised to match your light source.

## ■ 3 selectable colour modes

Shoot your images in either Natural Colour, Vivid Colour, or Black & White.

## ■ PASM exposure settings

Precise exposure control is available with these four modes. Program (P) leaves everything to the camera, Aperture priority (A) lets you alter depth of field and Shutter priority (S) allows you to change shutter speeds. Manual (M) offers control over both shutter speed and aperture.

## ■ Variable ISO settings

Sensitivity, yet another creative variable, can be switched from Auto to any of these ISO-equivalent settings: 64, 100, 200, or 400.

## ■ Exposure bracketing

Capture a series of exposures with each shot to make sure you're getting the image you most desire. Bracketing is selectable from  $\pm 0.3$ , 0.5, or 1.0 EV.

## ■ Flexible metering

Depending on how your subject looks, you can choose multi-segment metering, spot metering, or centre weighted metering to achieve optimum exposure accuracy.

## ■ Bulb exposures

With a slow shutter speed, you can create images with interesting effects, such as flowing light trails taken against a dark background.

DEC (Saturation)



Low



Normal



High

COLOUR MODES



Natural Colour



Vivid Colour



Black & White

BRACKETING



-1



0



+1



BULB SHOOTING