

MINOLTA

The essentials of imaging

www.minolta.com

*Di*MAGE F200

Advanced Technology for Quality with Ease

4
MEGAP
PIXELS



www.dimage.minolta.com



Dynamic Shots... Automatically

- Superior 4.0 megapixel quality
- Area AF & Subject Tracking AF with Focus Area Selection—Choose your target and the DiMAGE F200 keeps it in focus
- Seamless 12x zoom (3x optical & 4x digital)
- Automatic Digital Subject Program Selection
- XR (Extended Recording) movies & audio



LOADED WITH TECHNOLOGY TO MAKE GREAT SHOOTING SIMPLER

The DiMAGE F200 will amaze you with its intelligence. If your subject moves, the F200 tracks it. If your scene changes, the F200 adjusts itself. And the end result is the same in either case—sharp, superb 4-megapixel images at the touch of a button. The F200 comes loaded with advanced Minolta technology, including the GT Lens, CxProcess™ image processing, and the innovative Area AF—now more powerful than ever. All in a compact, stylish body with a comfortable grip. A unique imaging experience awaits you.

4 M E G A P I X E L S



DiMAGE F200

F O C U S I N G S T A Y S R I G H T O N T R A C K



AUTO



Automatic image rotation

Get a good look at all your shots without having to turn the DiMAGE F200 to do so. During playback, images taken vertically are automatically rotated for display on the LCD monitor. This handy feature also works when you connect the F200 to a TV, to view your shots on a big screen.



Area AF & Subject Tracking AF with Focus Area Selection

Sharp images with maximum ease—that's what Area AF is all about. This Minolta innovation offers a wide focusing area with five focusing blocks. By choosing one of these blocks, you can pick out a specific subject in the frame. And if that subject begins to move, Subject Tracking AF activates. It follows your subject inside the focusing area, making sure your subject stays in focus whether it moves left or right, up or down. Autofocusing for the shot is pleasingly fast. And, best of all, operation is simple—just a half press of the shutter button, then a full press.



B R E A T H T A K I N G Q U A L I T Y F O R E V E R Y O C C A S I O N



QUALITY



4.0 megapixel resolution

The 4.0 megapixel CCD captures images with so much detail that they look great as large sized printouts—up to B4-size (approx. 15.2 x 11.4 inches / 38.5 x 29 cm) at 150dpi. The CCD's primary colour filter ensures high colour fidelity.

Automatic Digital Subject Program Selection

This exclusive Minolta function offers accurate detection of the type of scene you are shooting, and automatically adjusts the DiMAGE F200 for optimum exposures. There are five automatic settings, plus a manual mode for close-up shots.



Portrait



Sports



Macro



Sunset

See your shot better in the dark

If you're shooting at night or in the dark, the LCD monitor's colours become brighter automatically so that you can frame your shots easily. Also, movie clips recorded in low light are enhanced for better visibility.



Conventional model



DiMAGE F200



Minolta GT Lens (38 – 114mm*)

Powerful optics are a key to superior image quality. The Minolta GT Lens maximises CCD performance, and effectively optimises colour and image clarity.

* 35mm film camera equivalent

Clear, natural colours from Minolta CxProcess™

Get life-like colours with each shot. CxProcess image processing balances brightness, contrast, and other factors to replicate how a scene appears to the human eye.

Greater colour detail through 12-bit A/D

12-bit A/D conversion, which yields a range of over 68 billion colours, brings you extremely smooth gradations and fine shadow area detail.

Automatic noise reduction

Digital photos often have distracting specks of colour, but the DiMAGE F200 takes care of this problem, especially with slow shutter images.



CREATE THE IMAGES YOU HAVE IN MIND



CONTROL

Comfortable grip & intuitive controls

The DiMAGE F200 has a textured grip that gives you an extra secure hold of the camera at all times. Various controls, such as the zoom lever and cross key, also provide comfort and ease of use.

Exposure bracketing

Shoot first and pick the best one later. This function allows you to take three exposures for every image you capture. Brackets cover a range of ± 0.3 , 0.5, or 1.0 EV.



-1



0



+1

Variable ISO settings

Sensitivity can be controlled automatically or manually. Four ISO-equivalent settings (100, 200, 400, and 800) are included.

Three types of light metering

Take charge in diverse lighting situations by selecting the method that's best for your shot: multi-segment, spot, or centre weighted metering.

PASM exposure settings

Four modes are included to provide precise control over exposure: Program, Aperture-priority, Shutter-priority, and Manual. Each has its distinct advantages with different kinds of scenes.

Adjustable white balance

In addition to five preset choices (Auto, Daylight, Cloudy, Tungsten, and Fluorescent), there is a customisable setting for dealing with unique situations.

Digital Effects Control (DEC)

With DEC, you can adjust three separate factors (contrast, saturation, and exposure compensation), and check how these effects look before taking the shot.



Saturation:

Low



Normal



High

Four colour modes to choose from

Capture your images in either Natural Colour, Vivid Colour, Black & White, or Sepia.



Natural Colour



Vivid Colour



Sepia Colour



Black & White

Bulb exposures

A slow shutter lets you create images with intriguing effects, such as flowing light trails against a dark background.

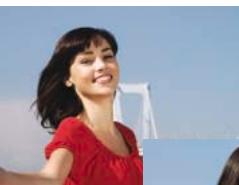


WHEN YOU WANT TO DO MORE, YOU CAN



DIVERSITY

XR (Extended Recording) movies



Shift modes and capture movies with audio. The DiMAGE F200 has two quality settings to choose from (160 x 120 or 320 x 240), and continues recording until your memory card is full.



On rare occasions, some memory cards may not record to full capacity due to their writing speed.



Seamless 12x zoom (3x optical & 4x digital)

A wide zoom range lets you shoot comfortably over long distances. When you reach the limits of optical zoom, just keep pressing the zoom lever to shift seamlessly into digital zoom. Zoom is adjustable in 0.1x steps.



Optical zoom



Digital zoom

Direct video recording

By connecting the DiMAGE F200 to your VCR, you can record what's happening on video tape. Visuals are as smooth as they appear on the LCD monitor, and audio is included. Great for parties and family gatherings.

Separate AV cable required. Capture rate: 30 fps in NTSC, 25 fps in PAL.

Audio files up to 3 hours long

Sounds, not images? The DiMAGE F200 records these as well—up to 3 hours* of audio in 8-bit uncompressed WAVE format. Short audio files (up to 15 seconds long) can also be recorded using the Voice Memo function.

* Requires 128MB SD Memory Card.

Fluid playback of captured images

Find an image on your memory card in no time at all. You can view one shot after another at 0.2-second intervals, regardless of their resolution.

Direct printer connection

High-quality prints, right away! The DiMAGE F200 can be connected directly to desktop printers that support USB DIRECT PRINT technology. No computer connection is required.

Other handy features

- 1 Resizing function for making e-mail attachments (E-mail Copy, 640 x 480 or 160 x 120 pixels)
- 1 Custom Shutter Recording to create your own shutter sounds, plus various selectable control sounds
- 1 Self timer (10 seconds)
- 1 SD Memory Card and MultiMediaCard compatibility
- 1 DiMAGE Viewer (image editing software)



SPECIFICATIONS

| | |
|---|--|
| No. of effective pixels | Approx. 4.0 million |
| CCD | 1/1.8-type interline primary-colour CCD with a total of approx. 4.1 million pixels |
| Lens | 7.8 – 23.4 mm (35 mm equivalent: 38 – 114 mm), f/ 2.8 – f/ 4.7; 8 elements in 7 groups |
| Recording media | SD (Secure Digital) Memory Card / MultiMediaCard |
| File format | JPEG, TIFF, Motion JPEG (MOV) with Audio, DCF1.0, DPOF, Exif2.2 |
| No. of recorded pixels | 2272 x 1704, 1600 x 1200, 1280 x 960, 640 x 480 |
| Storage capacity | (1600 x 1200) Economy: 47, Standard: 27, Fine: 14, TIFF: 2 |
| (approx. no. of frames*) using 16 MB SD card | Movie recording (approx.): (320 x 240) 41 seconds (160 x 120) 2 minutes 30 seconds Audio recording (approx.): 30 minutes 51 seconds * The actual number of images may vary depending upon the subject and the media used. |
| Autofocus system | Video AF |
| Autofocus area | Wide focus area (Area AF), Spot focus area with Focus Area Selection |
| Focus modes | Autofocus: Subject Tracking AF with Focus Area Selection, Single-shot AF, Full-time AF (available in AF mode), Manual focus |
| Focusing range | Wide / Telephoto: 45 cm to infinity (from front of the lens) Macro: 14.5 cm to 54.5 cm (from front of the lens) |
| Exposure mode | Programmed AE, Aperture priority, Shutter priority, Manual |
| Digital Subject Program Selection | Automatic: Portrait, Sports action, Landscape, Sunset, Night portrait Manual: same as the above, plus Macro |
| Exposure bracketing | 1.0 / 0.5 / 0.3 Ev increments; No. of bracket: 3 frames |
| Metering | Multi-segment (256 segments), Spot, Centre-weighted |
| Camera sensitivity | Auto and 100 / 200 / 400 / 800 ISO equivalent |
| Self-timer | Approx. 10 seconds delay |
| Remote Control | IR Remote Control RC-3 (optional) |
| White-balance control | Automatic, Preset (Daylight, Tungsten, Fluorescent, Cloudy), Custom |
| Flash mode | Autoflash, Autoflash with red-eye reduction, Fill-flash, Flash cancel. |
| A/D conversion | 12 bits |
| LCD monitor | 3.8 cm TFT colour, with total 110,000 (approx.) pixels equivalent |
| Noise reduction | User selectable |
| Printing output control | Exif Print, PRINT Image Matching II, USB DIRECT-PRINT |
| PC interface | USB ver. 1.1, Video output PAL / NTSC (selected on the camera) |
| Battery | One CR-V3 lithium-ion battery or two AA Ni-MH batteries |
| Battery performance (Minolta measurement) | Continuous playback time: approx. 270 minutes with CR-V3 battery, approx. 150 minutes with Ni-MH battery (1850mAh) |
| External power source | 3V DC (with specified AC adapter) |
| Dimensions (WxHxD) | Approx. 111.0 x 52.5 x 32 mm |
| Weight | Approx. 185 g (without batteries and recording media) |
| Standard accessories | Batteries (CR-V3), Hand Strap (HS-DG100), AV Cable (AVC-200), USB Cable (USB-500), SD Memory Card (16 MB), DiIMAGE Software CD-ROM |

Specifications and accessories are based on the information available at the time of printing, and are subject to change without notice. For the latest information, please visit: www.minoltaeurope.com
Availability of accessories depends on areas.

Compatible Computers

● IBM PC / AT compatible computers with preinstalled Windows XP, Windows Me, Windows 2000 Professional, Windows 98*, or Windows 98 Second Edition* and with a built-in USB port as standard interface. ● Apple Macintosh computers with Mac OS 9.0—9.2.2 or Mac OS X v.10.1.3—10.1.5 and v.10.2.1—10.2.2, with a built-in USB port as standard interface.

* Users of Windows 98 and Windows 98 SE must install dedicated driver software supplied with the product.
For more compatibility information, please visit: www.minoltaeurope.com

Notes:

Computers and operating systems must be guaranteed by their manufacturers to support USB interface. For details, please contact the manufacturer. Problems may be encountered depending on what other USB devices are being used in parallel with this product. Only a built-in USB port is supported. Problems may be encountered when the camera is connected to a USB hub. Normal operation may not occur even if all the system requirements are met.

- Minolta, DiIMAGE and CxProcess are trademarks or registered trademarks of Minolta Co., Ltd.
- All other brand and product names are trademarks or registered trademarks of their respective owners.

| | |
|----------------------------------|--|
| Minolta Co., Ltd. | 3-13, 2-Chome, Azuchi-Machi, Chuo-ku, Osaka 541-8556, Japan |
| Minolta Europe GmbH | Minoltaring 11, D-30855 Langenhagen, Germany |
| Minolta (UK) Ltd. | Rooksley Park, Precedent Drive, Rooksley, Milton Keynes, MK13 8HF, England |
| (Photo Operations) | |
| Photopak Sales | 241 Western Industrial Estate, Naas Road, Dublin 12, Ireland |
| Minolta Portugal Limitada | Av. do Brasil 33-A, P-1700 Lisboa, Portugal |

Minolta homepage address: www.dimage.minolta.com www.minoltaeurope.com

This brochure is printed with soy ink for environmental preservation.