

**EPSON**<sup>®</sup>  
EXCEED YOUR VISION



Epson  
EB **G5000 Series**



When image is everything,  
real value stands out

# Projectors that stand out

**Epson EB-G5000 Series projectors** are powerful, bright and can be ceiling-mounted to reach large audiences. A unique mix of innovative features and smart design simplifies installation, operation and monitoring to dramatically enhance the visual experience of your audience. Built to strict environmental standards, they are cost efficient and provide exceptional long-term value.

These projectors are ideal for very large corporate meetings or shareholder gatherings; for theatres and halls in educational or cultural institutions; for digital signage in airports or shops; for special big events such as lectures, civic celebrations or sports tournaments.



**Trust the world leader  
for the last 7 years  
to deliver your message  
in lecture theatres or classrooms.**

Source: Decision Tree Consulting Ltd.



## Bright natural images



With single panel system\*

With Epson 3LCD technology

The Epson EB-G5000 Series projectors produce bright clear images with great colour fidelity on screens up to 300 inches (diagonal). Images look superb in ambient lighting, even daylight, which allows a lot of flexibility when arranging a venue.

This high quality is thanks to two proprietary technologies. Epson 3LCD provides natural colour reproduction, and the Epson compensation filter achieves a very high native contrast ratio (up to 1000 :1).

\* Images for illustrative purposes only.



## Manage your networked projectors

From one PC running Epson Network monitoring and control software you can see at a glance which projectors are available and if they are running efficiently – no matter how wide your network is.

You can configure Epson projectors remotely, as well as receive instant alerts on pre-defined critical indicators such as non-functioning devices or overheating lamps.

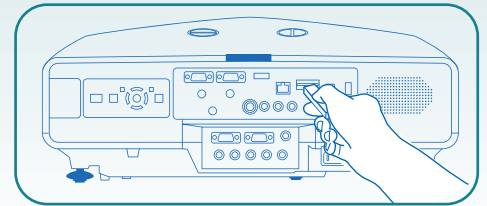
Users have instant access to the settings of their individual projector and to online IT support. Controlling settings or putting projectors onto a common timer allows efficient running, which reduces energy costs.

# EasyMP™ Easy Multimedia Presentation technology

## Standalone operation makes life simple

As your projector can be ceiling-mounted and perhaps out of reach, the Epson EB-G5150 and Epson EB-G5350\* allow you to store your presentations, movies, or pictures in the projector on an **SD card**. You simply launch the presentation whenever you want by using the remote control. And if you wish to edit your file – or someone else needs to set up their slideshow - this is easily done. Just upload the new file over the network from a PC to the SD card. It's fast, flexible and totally secure.

When the projector is sitting on a table and easily accessible, you don't even need a PC. Simply put your file onto a USB key and plug it into the projector. What could be simpler?



*Simply plug in your USB key or SD card*

## Less wires, more freedom

Epson EasyMP projectors can connect to computers via wired or wireless LAN. Connecting wirelessly saves the trouble and awkwardness of cables. Wireless connection is stable, and delivers the fast transfer speeds needed for full movies with sound.

Security is guaranteed through strong encryption technologies (compatible with Cisco CCXv4 protocols). Of course you can still use normal RGB cabling or simply connect your projector and PC by using Epson USB display function.



## Make a great show with more screens

You can link your PC to up to four separate projectors, by wireless or wired LAN, and project onto all screens.

Spread your visual across several displays, in panorama or a large square - invaluable for looking at complex spreadsheets and wide pictures. You can also show up to four different visuals - each running on a different application - and move between them.



### Certified for Windows Vista™\* Network Projector function

The Epson EB-G5350 and EB-G5150 and Windows Vista™ work together with no need to install additional applications or drivers. Simply connect the projectors to a PC with Windows Vista™ and launch the network projector function (WLAN or LAN). \*Excluding «Home Basic Edition»

\* EasyMP functions are only available on the Epson EB-G5150 and EB-G5350.

# Easy to install, simple to adjust

Epson understands that a user's priority is to concentrate on their presentation and their audience. A projector should be straightforward to install, configure and maintain. The Epson EB-G5000 Series projectors were designed with all this in mind.

## Intelligent installation

Although bright and powerful, the Epson EB-G5000 Series are incredibly compact and weigh less than 7Kg, which makes all the difference when mounting them on a ceiling.

From the front, one feature really stands out. The lens unit is centred, so aligning the projector is simple.



Cable cover for neat installation (included)



Security bar and Kensington lock hole

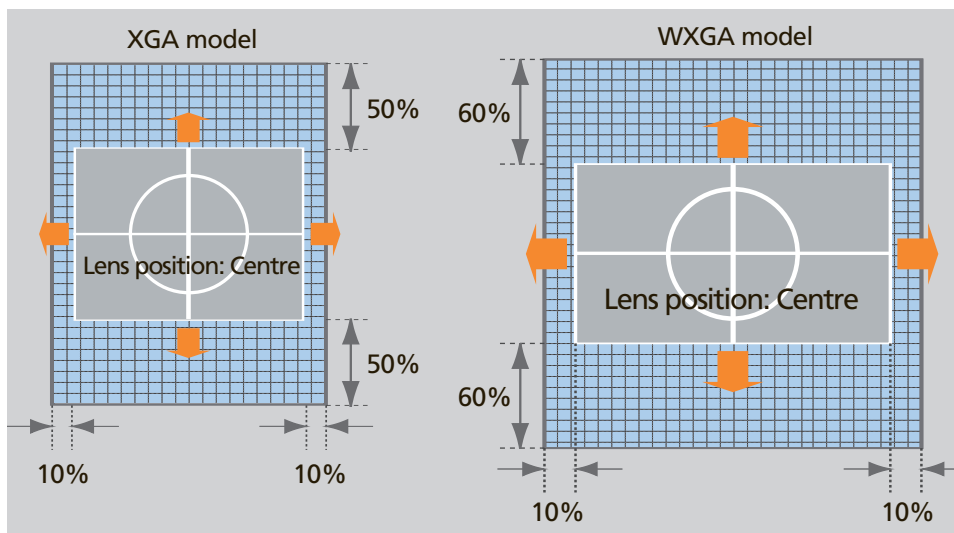


Easy, safe lens attachment

The modular lenses are bayonet-mounted in a single movement. They are quick to change yet once in place can be totally secured by an anti-theft screw.

## Lens shift

This allows horizontal/vertical manual adjustment of images on the screen with no loss of quality. 60% vertical/10% horizontal lens shift on WXGA model, 50% vertical/10% horizontal on XGA models.



Horizontal and vertical lens shift dials on top of the projector

## Keystone correction

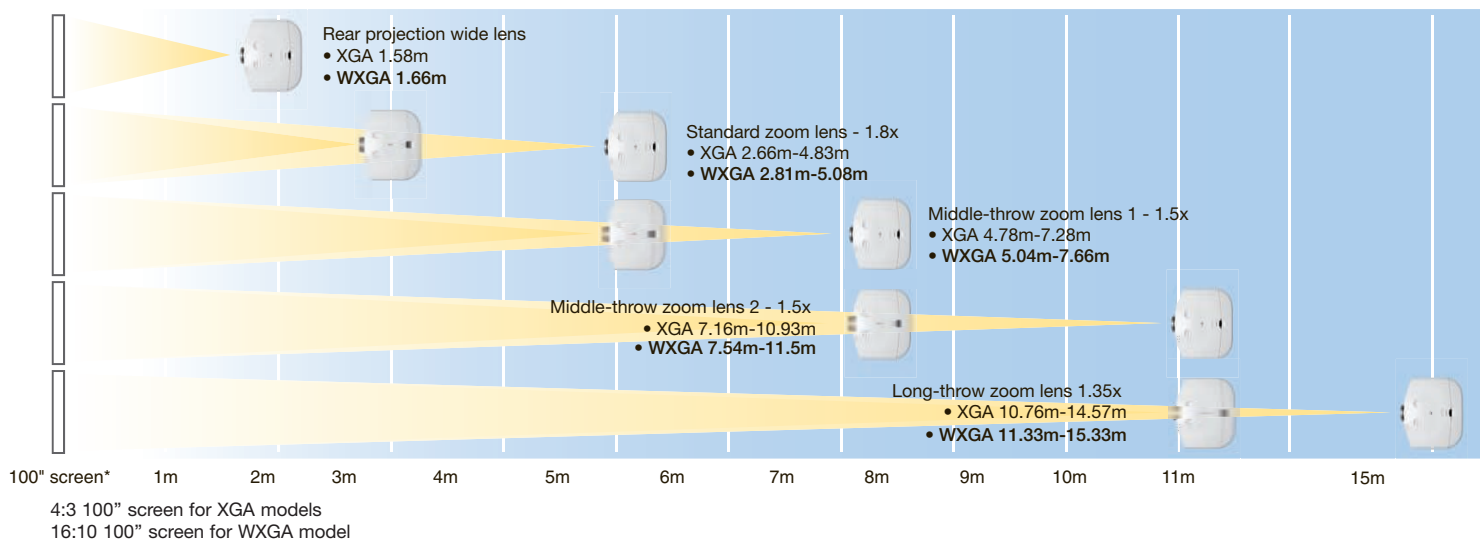
Achieve a squared image instantly and easily by adjusting distortions up to +/-40 degrees vertically and +/-20 degrees horizontally.

## Focus on flexibility: modular lenses


With the Epson EB-G5000 Series you can always choose the perfect projector because there are five different lenses available. This ensures you invest in a solution that suits your pocket – as well as suiting the conditions of particular venues and different types of multimedia content. The optional lenses allow you to mix zoom and wide-angle functions to suit your needs.

You can display a 100inch image with a projection range from 1.58 to 14.57 metres in XGA, and 1.66m to 15.33m in WXGA.

## Projection distances in XGA and WXGA



## Choice of lenses

Lens type		Standard Zoom Lens	Rear Projection Wide Lens	Middle-Throw Zoom Lens1	Middle-Throw Zoom Lens2	Long-Throw Zoom Lens
Reference		ELPLS03	ELPLR03	ELPLM04	ELPLM05	ELPLL06
Option lens						
Focus/Zoom type		Manual	Manual (No zoom)	Manual	Manual	Manual
Zoom ratio		1 - 1.8	-	1 - 1.5	1 - 1.5	1 - 1.35
Throw ratio* for XGA models 4:3 and 16:9 aspect ratios		1.3-2.4	0.78	2.4-3.6	3.5-5.4	5.3-7.2
Throw ratio* for WXGA model	16:10 and 16:9 aspect ratios	1.3-2.3	0.77	2.3-3.5	3.5-5.3	5.2-7.1
	4:3 aspect ratio	1.5-2.8	0.92	2.8-4.3	4.2-6.4	6.3-8.5
F Number		1.64-2.5	2.03	1.83-2.45	1.83-2.53	1.84-2.32
Focal Length		21.27mm -37.93mm	12.76mm	38.07mm -57.09mm	56.76mm -85.25mm	84.91mm -114.61mm
Screen size range		30-300 inch	30-200 inch	40-300 inch	40-300 inch	40-300 inch
Manual Lens shift	Vertical (XGA model)	±50% max	-	±50% max	±50% max	±50% max
	Vertical (WXGA model)	±60% max	-	±60% max	±60% max	±60% max
	Horizontal	±10% max	-	±10% max	±10% max	±10% max
Anti-Theft screw		Included	Included	Included	Included	Included
Lens protection		Lens cover cap	Lens cover cap	Lens cover cap	Lens cover cap	Lens cover cap
Weight		0.6 Kg	0.78 Kg	0.89 Kg	0.95 Kg	0.9 Kg
Order number		V12H004S03	V12H004R03	V12H004M04	V12H004M05	V12H004L06

\*Projection distance = Screen width x Throw ratio

To choose the right lens for your needs, visit the [www.epson-europe.com](http://www.epson-europe.com) and download the latest Projector Distance Calculator.

# A wide range for maximum flexibility

## The right projector for you

With five projectors in the Epson EB-G5000 Series you can be sure of finding one that will match your requirements. Designed for reliability, easy maintenance, and low running cost, the projectors come in two levels of brightness. Their sleek, compact design also allows them to fit unobtrusively in a boardroom or other venue. The integrated 7W speakers can fill a medium-sized room.

All models are XGA except the Epson EB-G5200W with its native widescreen panel. Epson Network Integration simplifies remote monitoring of the projectors and reduces their running costs. EasyMP allows your projector to run standalone from a portable drive, connect wirelessly to a PC and screen, and run simultaneously with up to four projectors.



Epson  
EB **G5350**

5000 ANSI lm



XGA

EasyMP™



Epson  
EB **G5300**

5000 ANSI lm



XGA

LAN

Epson  
EB **G5200W**

4200 ANSI lm



WXGA

LAN

Epson  
EB **G5150**

4000 ANSI lm



XGA

EasyMP™



Epson  
EB **G5100**

4000 ANSI lm



XGA

LAN



### You're free to move

The new remote control has a very wide range and functions at a greater distance than before, thanks to two built-in infrared receptors. You can be far more mobile during your presentation. If the venue is unsuitable for IR reception you can also attach the remote control to the projector by a 20-metre cable (optional).

## Easy maintenance

### Higher reliability

The new long-lasting lamp can operate for up to 3,000 hours of normal use. The redesigned electrostatic filter is both highly efficient at keeping out dust and also very durable.

### Easy to change

When finally the filter and lamp do need to be changed it can be done in a minute. They are easily accessible through a side hatch, which also minimises the risk of dropping the lamp accidentally.



Slide-in high efficiency filter

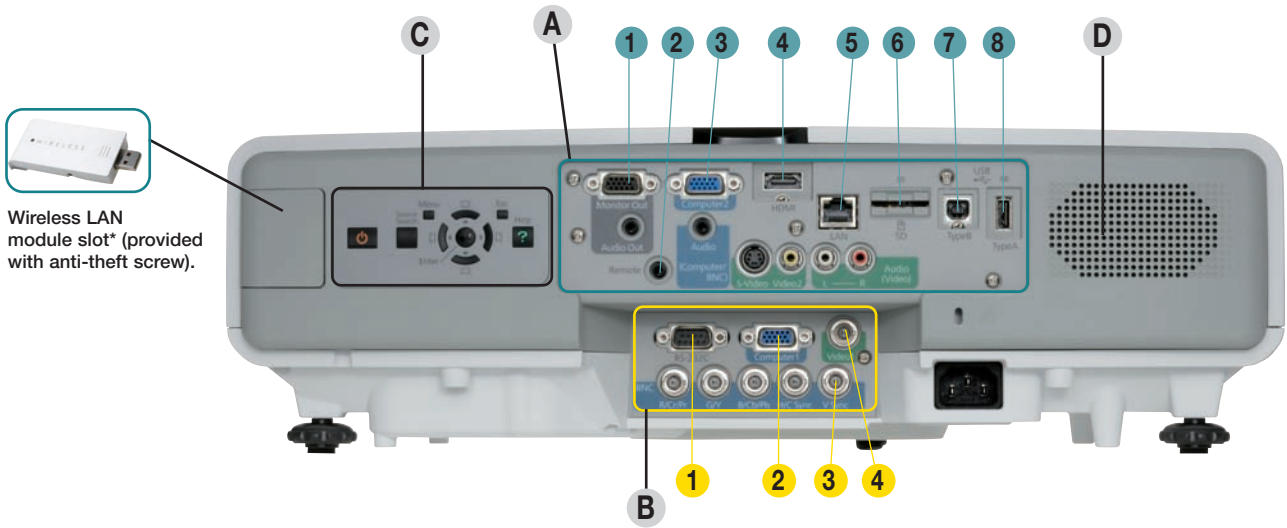


Safe access to lamp

# Connections: all you need, yet simple

Look at the back and it is clear that the Epson EB-G5000 Series projectors are built to connect to a wealth of devices. They are compatible with the latest audiovisual and PC standards, including HDMI.

Connections are arranged on two levels, one inside for ceiling installation cables and another for desktop inputs. This keeps everything tidy and convenient for quick access.



### A - For desktop usage

- 1 - Monitor out
- 2 - Wired remote jack
- 3 - Computer 2 (D-sub 15)
- 4 - HDMI
- 5 - RJ45
- 6 - SD Card slot\*
- 7 - USB Type B\*
- 8 - USB Type A\*

### B - For ceiling-mount usage

- 1 - RS-232C
- 2 - Computer 1 (D-sub 15)
- 3 - 5 BNC
- 4 - Composite video (BNC type)

C - Rear-located control panel

D - Speaker (7W)

\* Not available on EB-G5100, EB-G5200W and EB-G5300.



## Easy cost efficient running, and impressively green

Epson EB-G5000 Series projectors are designed for the long-term, and that means low-cost efficient operation. They are manufactured according to Epson's strict Environmental Management System, which is based on ISO 14001.

The ability to monitor the projectors remotely ensures they are never left on by accident, and allows timely intervention if required.

### Details that make the difference:

- Projector body contains no paint coatings (except immediately around the lens) to enable recycling.
- No use of lead in the lens, or of halogen fireproofing.
- Operates on relatively low power (327W), and extremely low consumption on stand-by (0.6W).
- Packaging is made with recycled materials.

Specifications Epson EB-G5000 series		
Projection system (3LCD)	EB-G5100/EB-G5150/EB-G5300/EB-G5350 EB-G5200W	0.8-inch with MLA (x3) TFT 0.74-inch with MLA (x3) TFT
Native resolution	EB-G5100/EB-G5150/EB-G5300/EB-G5350 EB-G5200W	XGA (1024 x 768) / Native Aspect Ratio 4:3 WXGA (1280 x 800) / Native Aspect Ratio 16:10
Resolution supported		Analog Signal: VGA - UXGA - Digital video standard: up to 720p/1080p
Frequency (analog)		Horizontal: 15 kHz to 99 kHz - Vertical: 50 Hz to 120 Hz
Brightness	EB-G5100/EB-G5150 EB-G5200W EB-G5300/EB-G5350	High/Low brightness mode: 4000 ANSI lm / 3200 ANSI lm High/Low brightness mode: 4200 ANSI lm / 3360 ANSI lm High/Low brightness mode: 5000 ANSI lm / 4000 ANSI lm
Projection lens		5 optional lenses: See specifications p.5
Lamp		
• Type	EB-G5100/EB-G5150 EB-G5300/EB-G5350/EB-G5200W	210 W UHE 275 W UHE 3000 hours / 2000 hours (Low/High brightness mode)
• Life		
Colour Reproduction		Full-Colour (16.77 million colours)
Picture Quality improvements		3D Y/C separation, Noise Reduction Motion compensated Interlace-Progressive conversion
Fan noise	EB-G5100/EB-G5150 EB-G5200W EB-G5300/EB-G5350	Low/High brightness mode: 29 dB / 35 dB Low/High brightness mode: 30 dB / 37 dB Low/High brightness mode: 31 dB / 38 dB
Contrast ratio	EB-G5100/EB-G5150/EB-G5300/EB-G5350 EB-G5200W	1000:1 800:1
Keystone correction		Vertical: ±40 degrees Horizontal: ±20 degrees
Input		
• Computer		2x D-sub 15-pin (RGB), 1x5-BNC
• Video		2x D-sub 15-pin (component), 1xRCA, 1xS-Video, 1x1-BNC
• Digital (Video & Audio)		1xHDMI (up to 720p/1080p)
• Audio		1xStereo mini-jack, 2xRCA (White/Red)
• Control		1xRS-232C
• PC Free	EB-G5150/EB-G5350 only	1xUSB type A, 1xSD Card slot (SDHC compatible)
• USB Display	EB-G5150/EB-G5350 only	1xUSB type B
Output		Computer / Audio: 1xD-sub 15-pin / 1xStereo mini-jack
Network input		1xRJ45 (LAN)
Network Monitoring functions		Projector control and projector management via network (wireless or wired LAN): - Monitor Power status, Lamp status, Lamp hours, Temperature level, Error information, IP address - Control Epson projectors (Power On/Off, Change input sources), E-mail notification, Timer function Other features: SNMP, Web control, PJ-Link, Projector Control
Epson Network Software		EMP Monitor (for Windows) Epson Projector Control Software (for Windows, Web download only)
Built-in speaker		7W monaural
Direct Power On/Off		Yes
Security		Security bar, Kensington lock hole, lens lock screw
Other functions		Quick Corner, Source Search, Auto Detection of RGB/Component, Password Protected Function, 9 Colour Modes, High Altitude Mode, User logo, Freeze, A/V Mute slide, E-Zoom, Help, Test Pattern, Fan Stops at Network Standby, Remote Projector ID Function, Multi Screen colour adjustment function, AMX Device Discovery
Power supply wattage		100 - 240 V AC ±10%, 50/60 Hz
Power consumption lamp on	EB-G5300/EB-G5350/EB-G5200W EB-G5100/EB-G5150	398W 327W
Power consumption stand-by		0.6W (network off) / 12W (network on)
Operating temperature / altitude		0°C to 40°C / 0 to 3,000m (High Altitude Mode over 1500m)
Weight	EB-G5100 EB-G5150/EB-G5300/EB-G5200W EB-G5350	6.6 kg 6.7 kg 6.8 kg
Dimension (D x W x H)		381x 470x 135mm (excluding feet and lens)
On-screen menu		27 languages English, French, German, Italian, Spanish, Catalan, Portuguese, Russian, Ukrainian, Dutch, Danish, Hungarian, Czech, Polish, Romanian, Slovenian, Norwegian, Finnish, Swedish, Greek, Turkish, Arabic, Japanese, Chinese, Traditional Chinese, Korean, Thai
Warranty*		3 years



## Accessories

Power Cable	3m (included)
Computer Cable	1.8 m (included)
Remote Control	included
2xAA type batteries	included
User Manual	included
Epson Projector Software (CD-ROM)	included
Password Protect Sticker	included
Control Panel and Interface Stickers	included
Cable Cover	included
Lens release button lock screw	included with lens
Wireless LAN adapter (ELPAP03) for EB-G5150/EB-G5350	Included (with 2 x 8mm screws)
Standard lens (ELPLS03)	Included on EB-G5100 only
Optional lenses	See spec. p.5
Spare Lamp 275W for EB-G5300/EB-G5350/EB-G5200W	V13H010L46
Spare Lamp 210W for EB-G5100/EB-G5150	V13H010L47
Spare High Efficiency Filter	V13H134A17
Wired Remote Cable (ELPKC2)	V12H005C28
Ceiling Mount (ELPMB22)	V12H003B22
Ceiling Pipes 450mm (ELPPF13)	V12H003P13
Ceiling Pipes 700mm (ELPPF14)	V12H003P14

Advanced Functions	EPSON EB-G5150/ EPSON EB-G5350
Certified for Windows Vista™ Network Projector function	Wired or wireless connection between projector and computer with Windows Vista™ operating system (excluding Home Basic edition)
EasyMP™ Functions	
Wired/Wireless connection	Wireless LAN (802.11a/b/g) Multi-screen display (up to four projectors) with Windows 2000 and XP, Movie sending (MPEG2, WMV), WPS WEP: 128bit/64bit - WPA-PSK: TKIP/AES - WPA2-PSK: TKIP/AES - EAP(WiFi/WPA): EAP-TLS, EAP-TLS/MD5, EAP-TLS/MS-CHAPv2, PEAP/MS-CHAPv2, PEAP/GTC - EAP(Cisco): CCXv4, LEAP, EAP-Fast/MS-CHAPv2, EAP-Fast/GTC Windows 2000/ XP/Vista - Mac OS X 10.3/10.3.9/10.4.5/10.5.1 1xUSB type B for computer input
PC free function	1xUSB type A, 1xSD Card Slot (SDHC compatible) IMAGE: JPEG/BMP/GIF/PNG - MOVIE: MPEG2/MPEG4 ASP/MPEG4 AVC(H.264)/WMV8,9 - PRESENTATION SCENARIO: SIT (created by EMP Slidemaker2) Transferring or writing files to SD Card from network (SMB)
EasyMP™ Software	EMP NS Connection (for Windows and Mac), EMP Slidemaker2 (for Windows)

\* Warranty offers are not available for all countries. Please contact your local Epson representative.



For further information please contact your local Epson office or visit [www.epson-europe.com](http://www.epson-europe.com)

Austria 0810/20 01 13 (0,07 €/min.) Belgium 070/350120 (0.1735 €/min.) Czech 800/142 052 Denmark 44 50 85 85  
Finland 0201 552 091 France 0821 010 100 (0,12 €/min) Germany 01805/23 41 10 (0,14 €/Min.) Greece 210-8099499  
Hungary 06800 147 83 Ireland 1 800 409132 Italy 02-660321 10 (0,12 €/min.) Luxembourg 900/43010 (0,24 €/min.)  
Middle East +9714 8818934 Netherlands 0900-5050808 (0.05 €/oproep + 0.15 €/min.) Norway 22 06 42 80  
Poland 0-0-800 4911299 (0,16 zł/min.) Portugal 707 222 111 Russia (095) 777-03-55 Slovakia 0850 111 429  
South Africa (+2711) 465-9621 Spain 93 582 15 00 Sweden 0771-400135 (Mobilsamtal – 0,99 kr/min, Lokala samtal – 0,30 kr/min,  
Utlandssamtal – 0,89 kr/min) Switzerland 0848 448820 (4-8 cent./min.) Turkey (0212) 3360303 United Kingdom 0871 222 6702

Entity carrying out management and coordination pursuant to article 2497 bis of Civil Code: Epson Europe BV.

Epson® is a registered trademark of Seiko Epson® Corporation. All other product names and other company names used herein are for identification purposes only and may be trademarks or registered trademarks of their respective owners. Errors and omissions excepted, all specifications are subject to change without notice.

**EPSON®**