

MINOLTA

The essentials of imaging

www.minolta.com

DIMAGE Xi



3.2 MEGAPIXELS



3X OPTICAL ZOOM

The world's smallest, slimmest, and lightest digital camera*
with 3.2 megapixels and 3X optical zoom.

**Ready to Shoot at a Moment's Notice!
Take 3.2 Megapixels Everywhere.**

www.dimage.minolta.com

3.2 megapixels
3x optical zoom
1.2 second startup

Great Performance Has Never Been More Compact

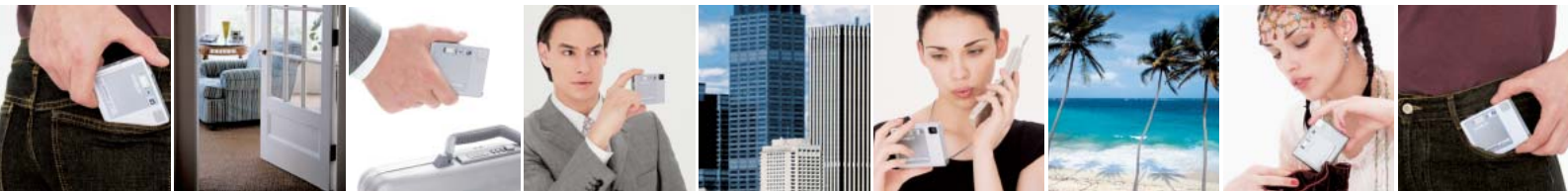
The World's Most Compact 3.2 Megapixel Camera*

Can you catch that shot? Sure you can...with the DiMAGE Xi, that is.
It's ready in a flash. Features 3X optical zoom without a protruding lens.
And has 3.2 megapixels for amazing results.
Sounds like a lot for a unit so small and light? You bet.
But Minolta's innovative optics gives you more power in less size.
Discover the ideal camera for an active lifestyle.
And enjoy it anytime, anywhere!

DiMAGE Xi



* The smallest, slimmest, and lightest among digital cameras with 3X optical zoom. As of Sep. 1, 2002.





3.2 megapixels

■ Highly detailed 3.2 megapixel images

The DiMAGE Xi captures a scene with massive amounts of detail, so that even fine lines and intricate patterns come out clearly. And because of their detail, your shots can be turned into photo-quality prints (for example, 35 x 26 cm prints at 150dpi printer resolution).

■ Natural, lifelike colours

With Minolta CxProcess™ image processing, you get vivid colours that faithfully reflect the way the scene appears to you. Subtle gradations are reproduced smoothly, skin tones look natural, and all the other colours in your image stand out with impressive clarity.

■ Ready in only 1.2 seconds

The DiMAGE Xi won't let an important moment pass you by. Just turn the power on, and you're ready to go. At approx. 1.2 seconds, it offers the fastest startup* of any optical zoom digital camera.

* As of Sep. 1, 2002.



1.2 second startup

Capture High Quality Images Right Away



1X



3X



12X

■ Fast, seamless 12X zoom (3X optical & 4X digital)

You can quickly zoom in on your subject because of the camera's sophisticated optics, which eliminates a protruding lens barrel. The 3X optical zoom (37 to 111 mm*) is enhanced by a seamless 4X digital zoom for even greater range.

* 35mm film camera equivalent.



■ Satisfying close-ups

Put the DiMAGE Xi right up to your subject for a clear shot, whether you're using the zoom or not. You can get as close as 25 cm from whatever it is you're shooting for breathtaking results.





■ Movie recording with audio

Sometimes a still picture won't be enough. At times like this, you can shift the DiMAGE Xi to its movie recording mode, and capture movie clips up to 35 seconds long, complete with audio. Now here's an easy way to check that golf swing!



■ Audio recording options

The DiMAGE Xi records up to 30 minutes of audio data only, which makes it as handy as any tape recorder. Volume can be controlled during playback. Alternatively, you can record a quick comment in a 15-second audio file, or add an audio caption (max. 15 seconds) to a shot you've taken.

■ Ultra small storage media

The SD Memory Card is a tiny and reliable storage medium that's growing in popularity. A 16MB card is included with the DiMAGE Xi. MultiMediaCards can also be used.



Versatility Is the Name of Its Game

■ Superb images with the built-in flash

The built-in flash provides Autoflash with red-eye reduction, Autoflash, and other modes. Night Portrait ensures that more background details show up in your pictures.



■ Quick review of each shot

If you want to check out your shot, just shift into playback mode and you can then scroll through all the images stored on your memory card. Deleting is easy, too.



■ Flexible focusing with Spot AF

Spot AF is helpful when your picture looks a little crowded. It lets you single out a specific subject from a group.

■ More practical features

- Selectable file formats: JPEG or TIFF
- Camera settings can be automatically saved for the next use
- Date imprinting
- Exposure compensation
- Selectable sensitivity (Auto, ISO50, ISO100, ISO200, ISO400)





■ Quick & easy image transfer

When you're ready to get some shots into your computer, simply plug in the DiMAGE Xi with its USB cable. This interface lets you connect the camera at any time (you don't have to turn off your computer), and offers speedy data transfer as well.

After Image Capture, the Action Continues...

■ E-mail Copy Function

High resolution images can get pretty big to e-mail. But if there's a shot you want to send to someone, you can use the camera to make a smaller duplicate of it.

■ High quality printouts

Greeting cards or a creative project? Perhaps a business document? Any way they're used, your shots will look great as printouts. Even at large sizes (up to 35 x 26 cm at 150dpi)!



■ User friendly DiMAGE Viewer

The DiMAGE Viewer software comes with a number of convenient tools for editing and managing your images.

■ File Number Memory

This feature makes it easy to sort through images in different folders within the memory card. Images are numbered consecutively, even if folders or memory cards are changed.

■ Show them on the big screen

The DiMAGE Xi opens up so many avenues of enjoyment. You can even hook it up to a TV for living room entertainment!



■ Minolta's innovative optics

The core technology of the DiMAGE Xi is Minolta's innovative folded optics, which uses a high-precision prism to bend light into the camera body. Lens elements are stacked vertically, and this allows the camera to adjust zoom internally, keeping it compact at all times. A quick start-up time, fast zooming, and silent operation are other advantages of this innovative mechanism.

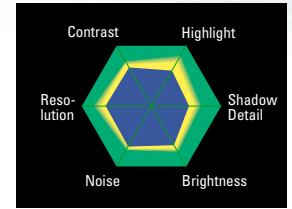


■ Superior quality Minolta lens

The Minolta lens used in the folded optics system is composed of 9 elements in 8 groups, with a total of 5 aspheric surfaces for reduced chromatic aberration. It is refined enough to maximise the capability of the CCD, and has a bright f2.8 aperture.

■ Minolta CxProcess™ image processing

Minolta's exclusive CxProcess image processing leads to clear, natural-looking colours that impress you the way the actual scene did. This is done by striking an optimum balance among vividness, colour reproduction, tonal gradation, and noise.



The yellow portion of the graph gives an idea of how the CxProcess works.

Advanced Technology Lies Within



■ High speed processing

Along with its unique optics, one of the key reasons for the rapid start-up time of the DiMAGE Xi is a high performance RISC CPU.

■ 1/2.7-type CCD with 3.2 megapixel resolution and a RGB colour filter

High image resolution comes from the camera's 1/2.7-type CCD sensor with 3.2 effective megapixels (3.3 total megapixels). And to ensure a superior level of vivid colour reproduction, the sensor includes an RGB primary colour filter.

■ Easy-to-use menus

Menus are organised in a user-friendly way to make it easy to change camera settings. They are displayed on the LCD monitor.

■ Long lasting battery with charger included

The lithium-ion battery stores a lot of energy, so you can take plenty of shots with a single charge. Battery charger is included.



SPECIFICATIONS

No. of effective pixels	Approx. 3.2 million
CCD	1/2.7-type interline primary-colour CCD with a total of approx. 3.3-million pixels
Lens	5.7 – 17.1 mm (35 mm equivalent: 37 – 111 mm), f/ 2.8 – f/ 3.6; 9 elements in 8 groups (includes 1 one-sided aspheric element and 2 double-sided aspheric elements)
Recording media	SD Memory Card / MultiMediaCard
File format	JPEG, TIFF, Motion JPEG (MOV), WAVE, DCF, DPOF
No. of recorded pixels	2048 x 1536, 1600 x 1200, 1280 x 960, 640 x 480
Storage capacity*	(2048 x 1536) Economy: approx. 36, Standard: approx. 18, Fine: approx. 9, Super fine: approx. 1, Movie: 41 seconds
(using 16 MB card)	* Numbers of the frame above may vary depending on the subject and the media used.
Autofocus system	Video AF, Focus lock available
Focusing range	0.25 m to infinity (from the front of the camera)
Exposure control	Programmed AE, AE lock available
Exposure compensation	±2 Ev in 1/3 increments
Metering	Multi-segment (256 segments)
Camera sensitivity	Auto (between ISO 50 – 160 equivalent), ISO 50/100/200/400
Shutter speeds	1/1000 – 2 seconds
Continuous advance	Approx. 1.6 frames per second
Self-timer	Approx. 10 seconds delay
Movie recording	Max. 35 seconds, with monaural audio
Audio	Audio recording: 30 minutes, Audio caption: 15 seconds, Voice memo: 15 seconds (monaural recording only)
Digital zoom	2X, 4X
White-balance control	Automatic, Preset (Daylight, Tungsten, Fluorescent, Cloudy)
Flash mode	Autoflash, Autoflash with red-eye reduction, Fill-flash, Flash cancel, Night portrait (with red-eye reduction)
A/D conversion	12 bits
LCD monitor	3.8 cm TFT colour, with total 110,000 pixels equivalent
Printing output control	PRINT Image Matching II
PC interface	USB ver. 1.1, Video output PAL / NTSC (selectable)
Battery	One lithium-ion battery
Battery performance*	Continuous playback time: approx. 110 minutes.
* Minolta measurement	Number of recording: approx. 120 frames
Operating time	Start-up time: approx. 1.2 seconds, Shutter-release time-lag: approx. 0.3 second, Playback interval: approx. 1 second
External power source	4.7V DC (with specified AC)
Dimensions (WxHxD)	84.5 x 72 x 20 mm
Weight	Approx. 130g (without batteries and recording media)
Standard accessories	Lithium-ion battery (NP-200), Battery Charger (BC-200), Hand Strap (HS-DG100), AV Cable (AVC-200), USB Cable (USB-500), SD Memory Card (16MB), CD-ROM for DiIMAGE Xi
Optional accessories	AC adapter (North America, Taiwan: AC-4, Other areas: AC-5) Camera Case (CS-DG100), Metal Chain Neck Strap (NS-DG100)

Specifications and accessories are based on the information available at the time of printing, and are subject to change without notice. For the latest information, please visit www.dimage.minolta.com
Availability of accessories depends on areas.

Compatible computers

● IBM PC / AT compatible computer with preinstalled Windows XP, Windows Me, Windows 2000 Professional, Windows 98*, or Windows 98 Second Edition* and with a built-in USB port as standard interface. ● Apple Macintosh models with Mac OS 8.6**—9.2.2 or Mac OS X 10.1.5 and with a built-in USB port as standard interface.

* Users of Windows 98 and Windows 98 SE must install dedicated driver software supplied with the product.

** Users of Mac OS 8.6 must download from the Internet and install "USB Mass Storage Support 1.3.5" offered by Apple Computer Inc.

Notes:

Computers and operating systems must be guaranteed by their manufactures to support USB interface.

For details, please contact the manufacturer.

Problems may be encountered depending on what other USB devices are being used in parallel with this product.

Only a built-in USB port is supported. Problems may be encountered when the camera is connected to a USB hub.

Normal operation may not occur even if all the system requirements are met.

More compatibility information (in English / French / German) at www.minoltaeurope.com/pe/digital/languages_stage.html

- Minolta, DiIMAGE and CxProcess are trademarks or registered trademarks of Minolta Co., Ltd.
- Windows is a trademark or a registered trademark of Microsoft Corp.
- Macintosh is a trademark or a registered trademark of Apple Computer Inc.
- All other brand and product names are trademarks or registered trademarks of their respective owners.

Minolta Co., Ltd.	3-13, 2-Chome, Azuchi-Machi, Chuo-Ku, Osaka 541-8556, Japan
Minolta Europe GmbH	Minoltaring 11, D-30855 Langenhagen, Germany
Minolta (UK) Ltd.	Rooksley Park, Precedent Drive, Rooksley, Milton Keynes, MK13 8HF, England
(Photo Operations)	
Photopak Sales	241 Western Industrial Estate, Naas Road, Dublin 12, Ireland
Minolta Portugal Limitada	Av. do Brasil 33-A, P-1700 Lisboa, Portugal
Minolta homepage address: www.dimage.minolta.com www.minoltaeurope.com	

Images are simulated

This brochure is printed with soy ink for environmental preservation.