

SPECIFICATIONS

Type: Compact digital still camera with built-in flash, 4x optical zoom and 4x digital zoom, 16x combined zoom.

Image Capture Device: 5.0 M pixel, 1/1.8 in. charge coupled device (CCD).

Sensitivity: Auto; 50/100/200/400 (Equivalent to ISO).

Resolution (Recording Pixels): 2,592 x 1,944 (Large), 1,600 x 1,200 (Medium 1), 1,024 x 768 (Medium 2), 640 x 480 pixels (Small), Movie: 320 x 240 or 160 x 120.

Image Quality Modes: Normal, Fine, SuperFine.

File Format: Design rule for Camera File system, DPOF Version 1.1 (Digital Print Order Format), JPEG (Exif 2.2 compliant).

Image Recording Format: Still Image: JPEG (Exif 2.2 compliant) / RAW; Movie: QuickTime AVI.

Recording Media: CompactFlash (CF) Card Type I or II (FAT12/FAT16, FAT32).

Shooting Modes: Auto, Creative (P, Av, Tv, M), Image (Portrait, Landscape, Night Scene, Stitch Assist), Movie, Custom 1, Custom 2.

Photo Effect: Vivid Color, Neutral Color, Low Sharpening, Sepia, Black & White and Custom.

Playback Modes: Single, Index (9 thumbnails),

Magnification (approx. 2x to 10x), Slide Show or Movie.

Erase Modes: Still images— Single image, All images; Movie— Part of movie, All movie.

Interfaces: USB, AV Out (Video: NTSC or PAL Selectable, Audio: Monaural).

Direct Printing: Direct connection to Canon Card Photo Printer CP-200, CP-300 and Bubble Jet Direct Photo Printers.

Lens: 7.2–28.8mm f/2.0–3.0 zoom Lens (equivalent to 35–140mm in 35mm format).

Shutter Speed: 15–1/2,000 sec. (Slow shutter of 1.3 sec. and more operates with noise reduction.)

Focus Range: Normal AF: 20 in. to Infinity/ 50cm to Infinity; Macro AF: 2 in. to 20 in./5cm to 50cm (WIDE); 6 in. to 20 in./15cm to 50cm (TELE).

Light Metering Method: Evaluative metering, Center-weighted average metering or Spot metering.

Exposure Control: Program AE, Shutter-priority, Aperture-priority or Manual; AE Lock is available.

Compensation: +/- 2.0 EV in 1/3-step increments.

Built-in Flash: Auto, Red-Eye Reduction On/Off, Slow-Sync, Flash On, Flash Off.

Flash Range: 2.3 ft to 16.5 ft / 70cm to 5.0m (WIDE); 2.3 ft to 13.1 ft / 70cm to 4.0m (TELE) (When ISO Speed is set to 100 equivalent).

White Balance Control: TTL Auto White Balance, Pre-set (Daylight, Cloudy, Tungsten, Fluorescent, Fluorescent H, or Flash), and Custom White Balance (Two settings).

Optical Viewfinder: Real-image zoom viewfinder.

LCD Monitor: 1.8 inch low-temperature polycrystalline silicon TFT color LCD.

Power Sources: Rechargeable Lithium-ion battery (BP-511/512) or Compact Power Adapter CA-560, Car Battery Cable Kit CR-560.

Dimensions: 4.8(W) x 2.9(H) x 2.8(D) in. / 121.0(W) x 73.9(H) x 69.9(D)mm.

Weight (w/o batteries or CF card): 14.5 oz./410g.

IMAGE STORAGE CAPACITY

File Size	Small/N	Small/F	Small/SF	Medium1/N	Medium1/F	Medium1/SF	Medium2/N	Medium2/F
CF-32MB	337	196	120	108	54	30	174	94
CF-64MB	676	393	241	217	109	61	349	189
CF-256MB	2,720	1,563	962	868	440	246	1,390	762
CF-340MB	3,640	2,183	1,323	1,213	614	343	1,898	1,065
CF-1GB	8,202	5,468	3,645	3,280	1,726	993	4,687	2,982
File Size	Medium2/SF	Large/N	Large/F	Large/SF	Movie/Low	Movie/Med	RAW	
CF-32MB	570KB	695KB	1,395KB	2,503KB	120KB/sec.	330KB/sec.	4,725KB	
CF-64MB	53	43	21	11	242 sec.	91 sec.	5	
CF-256MB	107	88	43	24	486 sec.	183 sec.	12	
CF-340MB	431	355	177	99	1,954 sec.	735 sec.	51	
CF-1GB	597	495	247	138	2,729 sec.	1,015 sec.	72	
CF-1GB	1,726	1,426	728	409	6,562 sec.	2,733 sec.	219	

Note: N=Normal F=Fine SF=Superfine

Storage capacity varies depending on the scene or the subjects. This data is estimated from Canon's standard shooting conditions. Figures for Movie Mode represent total capacity of CompactFlash Card.



SUPPLIED ACCESSORIES

- A. PowerShot G5 Body
- B. Compact Power Adapter CA-560
- C. Neck Strap NS-DC2
- D. Lens Cap
- E. Battery Pack BP-511
- F. CompactFlash Card FC-32M
- G. Wireless Controller WL-DC100
- H. Digital Camera Solution CD-ROM
- I. ArcSoft Camera Suite CD-ROM
- J. Interface Cable IFC-300PCU
- K. AV Cable AVC-DC100

All data are based on Canon's Standard Test Method. Subject to change without notice. Canon, PowerShot are registered trademarks and "digital revolutionized photography we revolutionized digital", DIGIC and Canon Know How are trademarks of Canon Inc. All other products and brand names are registered trademarks, trademarks, or service marks of their respective owners.

Canon KNOW HOW™

1-800-OK-CANON/www.usa.canon.com

Canon U.S.A., Inc.
One Canon Plaza, Lake Success, NY 11042 U.S.A.

Canon Canada Inc.
6390 Dixie Road, Mississauga, Ontario L5T 1P7 Canada

Canon Mexicana, S. DE R.L. DE C.V.
Periférico Sur No. 4124, 5ª y 6ª pisos
Col. Ex-Rancho de Anzaldo, 01900 México, D.F.

Canon Latin America
703 Waterford Way, Suite 400, Miami, FL 33126 U.S.A.

www.powershot.com

Canon

PowerShot G5

5.0 MEGA
PIXELS

CANON ZOOM LENS

7.2-28.8mm 1:2.0-3.0

digital revolutionized photography
we revolutionized digital



*This image was taken
with the PowerShot G5.*

A NEW LEVEL OF IMAGING QUALITY

With a stunning combination of resolution, speed and control, all housed in a rugged, elegant new black enclosure, the PowerShot G5 takes the lead as Canon's flagship PowerShot. The PowerShot G5 features an all-new 1/1.8" 5 megapixel CCD sensor, capturing a huge 2592 x 1944 pixel image with exceptional detail and color fidelity. It has a fast, high resolution 4x optical zoom lens with iris-type aperture and User-operated, multi-stop control for spectacular depth

of field, or elegant blur. Perfect focus, exposure, and color are achieved quickly with the combination of Canon's exclusive **DiGiC** imaging processor with iSAPS (Intelligent Scene Analysis based on Photographic Space) technology, an Intelligent Orientation Sensor, and the use of primary color filters. All these features, plus a host of manual and automatic functions ensure that the PowerShot G5 will get the perfect shot every time.



DiGiC

5 MEGAPIXELS

STUNNING

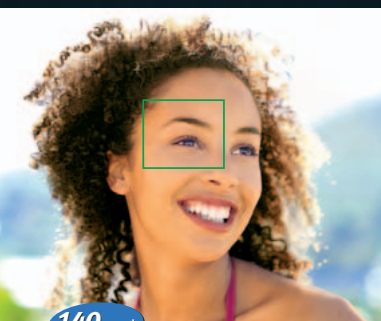
PHOTOGRAPHIC CONTROL

4X OPTICAL ZOOM

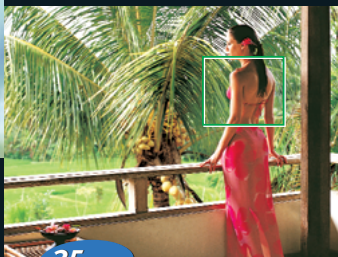
At the heart of the PowerShot G5 is Canon's powerful 4x, all-glass zoom lens. With a 35mm equivalent range of 35-140mm, a large maximum aperture of f/2.0-3.0, and macro focusing down to 2 in., there's virtually nothing this lens can't do. A 4x digital zoom feature extends the telephoto capabilities even further, effectively making it a 16x zoom.

FlexiZone AF/AE

Two choices for autofocus: use Canon's FlexiZone AF to move the focus point almost anywhere in the frame, or lock it at the center. Either way, you get precise, tack-sharp focus, from close-ups to scenics. There's even a focus bracketing feature, which shifts focus slightly over three separate pictures. Finally, there's a continuous AF setting – which leaves the AF active any time the camera is on – and single AF, which updates focus only when the shutter button is pressed halfway. PowerShot G5 autofocus: the power of choice.



140mm*



35mm*

* Approximately equivalent to 35-140mm in the traditional 35mm format.

270°

180°

Adjust your viewing angle over a wide range with the vari-angle LCD monitor.

MANUAL SETTINGS

In addition to a host of automatic features, the PowerShot G5 allows for full manual control. The user can set shutter speeds of 1/2000 – 15 seconds, and adjust aperture, focus, flash output and exposure compensation. Additionally, the PowerShot offers features such as exposure and focus bracketing, AF and AE lock, even a neutral density filter, ensuring total control for even the most discerning photographer.

THREE METERING SYSTEMS

The PowerShot G5 gives users three light metering choices. Canon's sophisticated Evaluative metering reads tens of thousands of separate areas of the full image, and is the ideal metering choice for most situations. There's also full-area Center-weighted metering, which is perfect for shooters who prefer to dial in their own exposure compensation. Finally, for the utmost precision, there's Spot metering – which can measure a tiny area either at the center of the image, or can be linked to the AF point if it's off-center.



Horizontal



Vertical

INTELLIGENT ORIENTATION SENSOR

Intelligent Orientation Sensor automatically rotates images for playback, improves auto exposure and white balance.

PHOTO EFFECT MODE

Color saturation is altered to create 5 settings in any shooting mode.

Photo Effect	Effect
Vivid Color	Yields vibrant shots with dramatic high-contrast.
Neutral Color	Produces images of subtle, elegant tonality.
Low Sharpening	Softens the image to create a soft-focus filter effect.
Sepia	Recreates the look of vintage photographs.
Black & White	Delivers enhanced clarity — especially useful when shooting text.

ENHANCE



ADVANCED FEATURES FOR CREATIVITY



FLASH PHOTOGRAPHY

For creative lighting, the PowerShot G5 includes a 3 mode built-in flash, which can be operated manually or automatically, with Red Eye Reduction, with first or second-curtain sync, and more. Additionally, the camera includes a dedicated hot shoe, enabling total compatibility and control of Canon's full line of EX-series Speedlite external flashes, and is totally compatible with Canon's unique E-TTL Wireless flash system.

WHITE BALANCE AND ISO CONTROL

To ensure the perfect exposure in any situation, the PowerShot G5 offers the characteristics of virtually every type of film in traditional photography. With a total of 9 white balance settings, including automatic, six preset, and two custom positions, it can adjust for almost any lighting condition. It also offers a choice of ISO ratings, from ISO equivalents of 50 – 400. A neutral density filter setting allows for slower shutter speeds in extremely bright situations. Long-exposure noise reduction is automatically applied to any images 1.3 seconds or longer.

RAW MODE CAPABILITY

Save your photos in the RAW format when you want to capture at the highest possible quality with no compression. Preview, transfer and convert to other formats using software bundled with the camera.

SHOOTING MODES

C1 C2 Custom Mode

User controls and stores all settings for preferred effects.

M Manual

The user has complete control of aperture and shutter speed.



AV Aperture Priority

The user sets the aperture, controlling depth of field. The camera selects shutter speed.



TV Shutter Speed Priority

The user selects the shutter speed. Canon's noise reduction system makes a very slow speed possible.



P Program

The user sets almost all parameters; the camera selects aperture and shutter speed.



AUTO Auto

The camera sets all parameters for the user.

Portrait

The camera selects a larger aperture, focusing the subject, blurring the background.



Landscape

The camera opts for a smaller aperture.



Night Scene

Background exposure and slow-sync flash for a night scene or sunset.

Stitch Assist

Precise combination of images for a panoramic effect.

Movie

QVGA or QQVGA, with audio, for continuous recording up to three minutes. Unwanted scenes can be deleted in playback mode.





Speedlite
550EX/420EX/220EX



Speedlite Transmitter
ST-E2



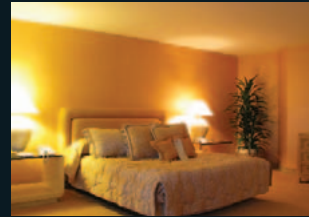
Macro Twin Lite MT-24 EX
Macro Ring Lite MR-14 EX

EX-SERIES SPEEDLITES

The PowerShot G5 is fully compatible with Canon's powerful EX-series Speedlites. Its hot shoe accommodates the 550EX, 420EX and 220EX Speedlites, as well as the Macro Twin Lite MT-24 EX, the Macro Ring Lite MR-14EX, even the Speedlite Transmitter ST-E2 for off camera, and slave flash photography. Speedlites 550EX and 420EX have bounce flash capability for pro-quality, natural lighting.



COMPREHENSIVE SYSTEM ACCESSORIES



without Wide Converter



with Wide Converter WC-DC58N

CONVERSION LENSES

To expand the range of the PowerShot's 4x optical zoom lens, Canon makes a range of accessory lenses. Wide Converter WC-DC58N reduces the focal length by 0.7x for a 35mm equivalent of 24.5mm. Tele Converter TC-DC58N increases the focal length by 1.75x for a 35mm equivalent of 245mm. To take your Macro photography a step further, try Canon's Close-up lens 250D. All of these lenses mount directly to the PowerShot G5 with Conversion Lens Adapter LA-DC58B.



Wide Converter
WC-DC58N*



Tele Converter
TC-DC58N*



Close-up Lens
250D*



Conversion
Lens Adapter
LA-DC58B

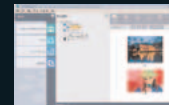
*Requires Conversion Lens Adapter LA-DC58B

Note: When using the Converter lenses, we recommend using the LCD monitor to preview composition and refraining from the use of the built-in flash to avoid harsh shadows in the resulting photos.

CANON SOFTWARE

ZoomBrowser EX (Win)/ ImageBrowser (Mac)

ZoomBrowser EX has significantly improved. Enhanced user interface, speed and database file reliability allow shorter downloads, image delete and copy times. ImageBrowser is available for Mac.



PhotoStitch

PhotoStitch composes panoramic shots from a sequence of images.

PhotoRecord

Provides auto layout printing for Windows users.

File Viewer Utility

Sets parameters for RAW images (white balance, contrast, color intensity) and provides a selection of various image display methods.

RemoteCapture

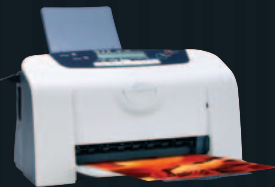
RemoteCapture allows remote control of the camera from a computer.

Third-party application include Apple QuickTime.

EXHENSIVE



Bubble Jet Direct Photo Printers



Card Photo Printers



CONNECTIVITY

DIRECT PRINTING

The PowerShot G5 is capable of direct printing with a number of Canon Photo Printers. In conjunction with Card Photo Printers and Canon Bubble Jet Direct Photo Printers, the PowerShot G5 can provide professional quality prints without a computer.

TYPES OF PRINT



8.5" x 11" (Bubble Jet Printers only)

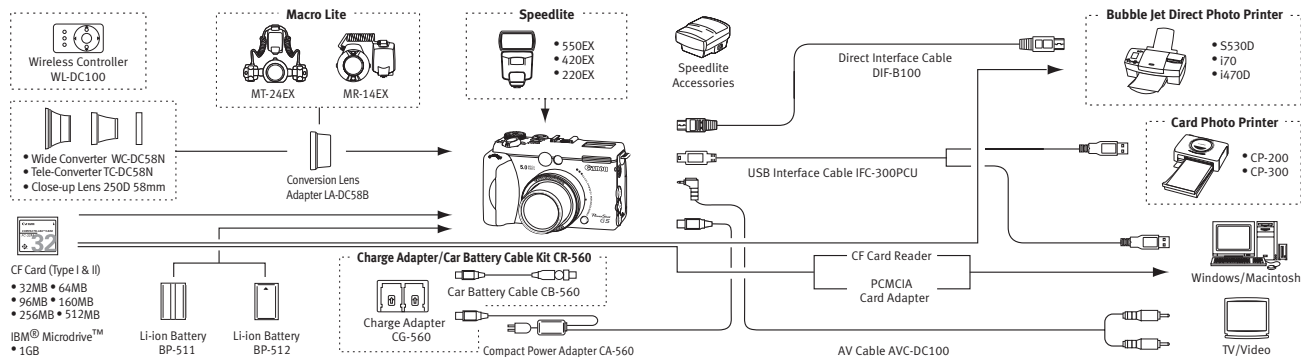


4" x 6"
(Bubble Jet Printers or Card Photo Printers)



Credit Card Size
(Card Photo Printers only)

CONNECTION DIAGRAM



OPTIONAL ACCESSORIES



Compact Power Adapter
CA-PS400 Kit



Charge Adapter/
Car Battery Cable Kit
CR-560



Battery Charger
CB-5L



Battery Pack
BP-511



Leather Case
PSC3000



Wireless
Controller



CF Cards and
Microdrives



USB Cable
IFC-300PCU



PowerShot
Accessory Kit 3