

you can
Canon

DIGITAL
IXUS 400

*Form comes first.
Function comes first.*



Canon Direct Print.

Canon's Direct Print function allows you to plug your digital camera straight into a printer and print photos instantly, without a computer in sight.

1 CONNECT

2 SELECT



3 PRINT

Canon's dedicated Card Photo Printer CP-100 is easy to use, compact and lightweight. And the optional rechargeable battery pack means you can take it everywhere. You can print credit card sized prints, stickers and photo postcards and with a Bubble Jet Direct printer you can print up to A4.

Pioneering digital technology.

The formula for empowered image-making is a simple combination - Canon's optical heritage and digital technology.



LENS TECHNOLOGY

A 3x optical zoom lens (approx. 11x combined optical and digital zoom) is suitable for a wide range of shooting conditions.

SENSOR TECHNOLOGY

4.0 Megapixels makes enlarging and cropping possible with no loss of detail.

PROCESSOR TECHNOLOGY

A dedicated high-performance DIGIC Processor delivers exceptional colour and clarity, allows fast continuous shooting and longevity of battery life.



Actual size

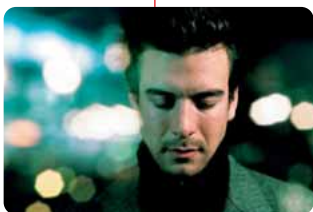
Designed to stand out from the rest.

Canon's smallest 4.0 Megapixel zoom camera is a mix of uncompromised aesthetics and advanced technology. State-of-the-art design leaves nothing to be desired except the need to hold it in your hand and shoot.



AUTO AUTO

For ease of use, Auto mode sets all the shooting parameters. All you have to do is point and shoot.



M MANUAL

Manual mode lets you take more control over your creative images.



STITCH ASSIST

Allows you to take a series of digital images which can later be aligned together using Canon Photostitch software for seamless panoramas.



MOVIE MODE

Create and edit movie clips up to 3 minutes long with sound and playback.



9-POINT AiAF

This intelligent feature automatically deduces the correct focus point wherever the subject is in the frame.





The meeting of Form and Function.

Teeming with revolutionary design and Canon technologies, never before has there been a more powerful meeting of form and function. The new Digital IXUS 400 - ultra-sleek stainless steel, wrapped up with advanced digital technology.



SPECIFICATIONS IXUS 400

IMAGE SENSOR	1/1.8" CCD, Camera effective pixels: approx.4.0M, Total pixels: approx. 4.1M. Maximum number of recording pixels: 2,272 x 1,704, Primary Colour filter
IMAGE PROCESSOR	DIGIC
LENS	7.4 (W) – 22.2 (T) mm (35mm film equivalent: 36 – 108mm), f/number: F2.8 (W) - F4.9 (T), 7 elements in 5 groups (2 aspherical elements)
ZOOM	3x optical, approx. 3.6x digital (Approx. 11x optical and digital combined)
FOCUSING	TTL 9-point AiAF, 1-point AF (centre), AF lock available, AF assist beam on/off, Focusing Range: Normal 46cm - infinity and Macro 5cm (W)/30cm (T) – 46cm
LIGHT METERING/EXPOSURE	Evaluative, Centre-weighted Average, Spot (centre), AE lock available, Exposure Compensation: +/- 2 EV in 1/3 step increments, ISO Speed: AUTO/ISO 50/100/200/400 equivalent
SHUTTER	15 – 1/2,000 sec (Shutter speeds of 1-15 seconds are manually selected with the long-shutter mode, in Manual mode), Noise reduction: With shutter speeds longer than 1.3 sec
WHITE BALANCE	Auto, Pre-set (Daylight, Cloudy, Tungsten, Fluorescent, Fluorescent H) and Custom
VIEWFINDER/MONITOR	Real-image zoom viewfinder, 1.5" Low-temperature Polycrystalline Silicon TFT Colour LCD
FLASH	Modes: Auto, Red-eye Reduction Auto, Manual Flash On/Off, Slow Sync, Flash Range: 30cm-3.5m (W) / 30cm-2.0m (T) (at ISO: AUTO), FE Lock is available
SHOOTING MODES	Auto, Manual, Stitch Assist, Movie (with sound), Photo Effects: Vivid/Neutral/Low Sharpening/Sepia/Black&White, Continuous Shooting: High Speed approx. 2.5 shots/sec (maintaining speed for up to 5 shots) and Normal approx. 1.5 shots/sec (maintaining speed for up to 8 shots) (Large/Fine with LCD monitor off)

All data is based on Canon's standard testing methods. Subject to change without notice.

Canon reserves the right to change specifications without notice. ™ and ®: All company and/or product names are trademarks and/or registered trademarks of their respective manufacturers in their markets and/or countries.





NUMBER OF RECORDING PIXELS/COMPRESSION	Still Images: (L)2272 x 1704, (M1)1600 x 1200, (M2)1024 x 768, (S)640 x 480 (selectable compression of SuperFine, Fine, Normal), Movie: 320 x 240, 160 x 120 (movies shot at 15fps for up to 3mins, depending upon CF card type and capacity)
FILE FORMAT	Still Images: JPEG (Exif 2.2 [Exif Print] compliant)/Design rule for Camera File system, Digital Print Order Format (DPOF) Version 1.1 compliant, Movies: AVI [Motion JPEG + WAVE (monaural)], Sound memo: WAVE (monaural),
DIRECT PRINTING	Canon Card Photo Printers and Bubble Jet Printers with the Canon direct print function
LANGUAGES	12 Languages (English, German, French, Dutch, Danish, Finnish, Italian, Norwegian, Swedish, Spanish, Chinese, Japanese)
OTHER FEATURES	My Camera (Start-up image and sounds camera customisation), Intelligent Orientation Sensor & iSAPS technology, Movie editing, Sound Memo (up to 60 sec), Internal Speaker, Magnify Zoom at Playback (2x - 10x), Histogram Display, Slide Show, DPOF / Transfer Order marking, Self Timer
INTERFACE	USB (PTP), A/V output (PAL/NTSC)
MEMORY CARD	Compact Flash Type I
SUPPORTED OPERATING SYSTEMS	PC: Win 98(including SE)/2000/Me/XP, Mac: OS 9.0 - 9.2/Mac OS X v10.1/10.2
SOFTWARE	Canon: ZoomBrowser EX/ImageBrowser, PhotoRecord(Windows only), PhotoStitch, RemoteCapture, File Viewer Utility, TWAIN Driver(Windows98, Windows2000), WIA Driver(Windows Me) Apple: QuickTime(Windows only) ArcSoft: PhotoImpression/VideImpression
POWER SOURCE:	Rechargeable Li-ion Battery NB-1LH(battery and charger supplied), optional AC adapter
OTHER ACCESSORIES	Waterproof case (submersible to 40m), Car battery charger, Soft case
OPERATING ENVIRONMENT	0 - 40°C, 10 - 90% humidity
DIMENSIONS (W X D X H)	87.0 x 57.0 x 27.8 mm
WEIGHT	Approx. 185g (Camera body only)



Accessories.

You can add accessories to the Digital IXUS 400, like the Waterproof case, watertight up to 40 metres. With an extensive Canon range, there's no limits to your photographic potential.



AC ADAPTOR KIT



WATERPROOF CASE



SOFT CASE



CF CARD



CAR BATTERY
CHARGER



BATTERY PACK

you can
Canon



Canon Europa NV
Conservation Partner

Canon Inc
30-2 Shimomaruko
3-chome, Ohta-ku
Tokyo 146-8501
Japan

Canon Europa NV
Bovenkerkerweg 59-61
1185 XB Amstelveen
The Netherlands

www.canon-europe.com

0036W541 © Canon Europa N.V. 2003

**Canon Digital
Creators Contest 2003**
The international digital imaging festival
www.canon.com/cdcc/

Be a winner!
For participation details visit the above website.