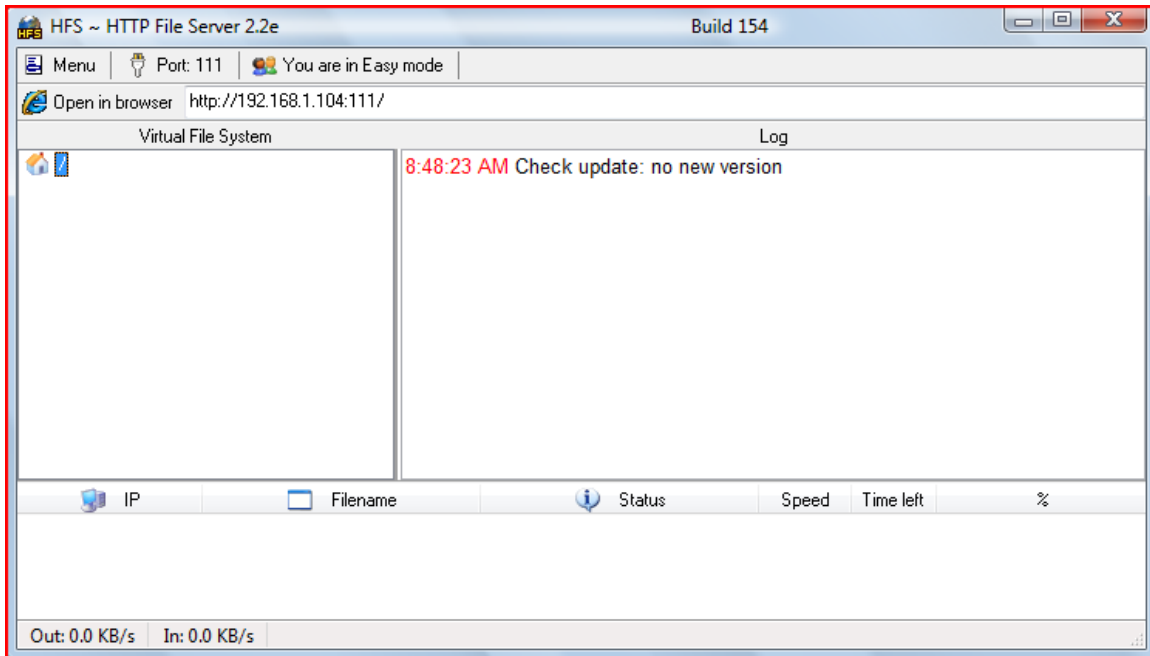


# Brightsign Simple Networking

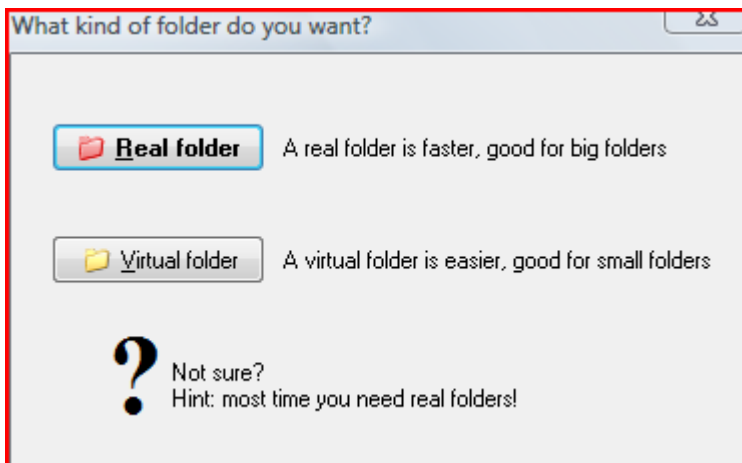
## HFS Web Server

The HFS webserver is a small server that requires no installation and very little configuration. It is a great way to test the Simple Network functionality of the Brightsign.



## Getting Started

1. Open HFS.exe (no other installation required)
2. Right-Click under "Virtual File System" and choose "Add Folder"
3. Browse your Hard drive and choose a folder you want to share
4. Choose "Real Folder" in the popup that appears



5. To set the **Port** you want to use, just click "PORT" at the top of the window
  - a. In most cases, this can be any port other than port 80. (111, for example)

Note: If you click on the folder under "Virtual File System", the URL you'll need to use with Simple Networking, appears in the "Open in Browser" filed.

