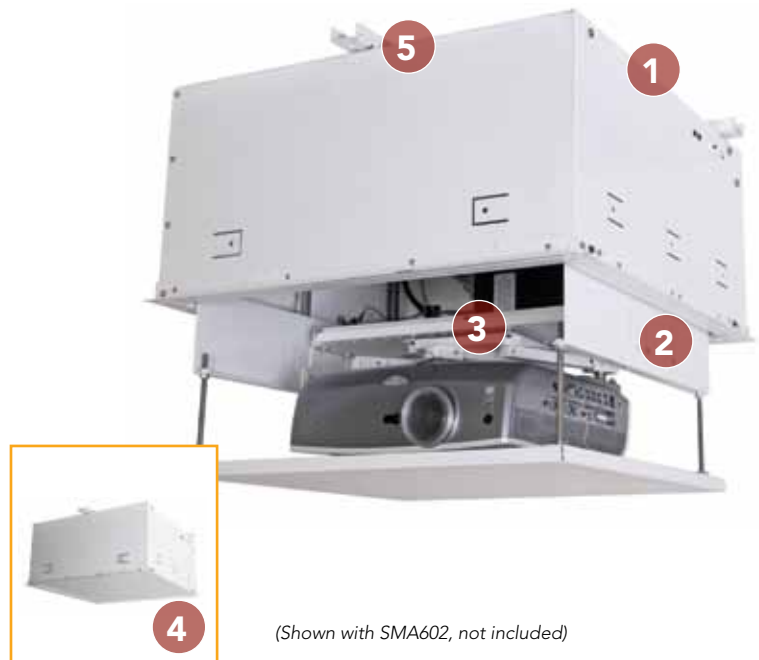




FEATURES

- 1 DROP-IN DESIGN**
New design fits 2 x 2' (600 x 600 mm) tiles without modification.
- 2 PRECISE POSITIONING**
Vertical projector cradle adjustment and fore/aft projector positioning.
- 3 QUICK CONNECT/DISCONNECT**
Convenient lamp/filter access, maintains registration even when disconnected.
- 4 LOW PROFILE**
Requires 11" (279 mm) clearance above ceiling. Provides 8.25" (210 mm) of downward travel.
- 5 MULTIPLE INSTALLATION OPTIONS**
Mounting options include: Three 0.38" (10 mm) threaded rods, 1-1/2" NPT threaded extension column with SMA602 accessory, and side mounting with built-in joist tabs.



(Shown with SMA602, not included)

SPECIFICATIONS

Extension	8.5" (216 mm)
Max Projector Size (HxWxD)	8.38 x 18 x 18.25" (213 x 457 x 464 mm)
Ceiling Opening (HxWxD)	11.25 x 24 x 24" (286 x 600 x 600 mm)
Ceiling Closure (WxD)	20.25 x 20.25" (514 x 514 mm)
Roll/Pitch/Yaw	±2°, ±20°, ±5°
Weight Capacity	35 lbs (15.9 kg)
Color	White

WHAT YOU NEED TO KNOW

MULTIPLE CONTROL OPTIONS

Choose from single momentary push button, low voltage controller and internal and external wiring options. Also accepts 5–30V AC/DC for triggering commands. AMX/Crestron control compatibility.

VOLTAGE OPTIONS

120VAC, 60Hz, 12A. For 230V order the SL151i (230VAC, 50Hz, 2A).

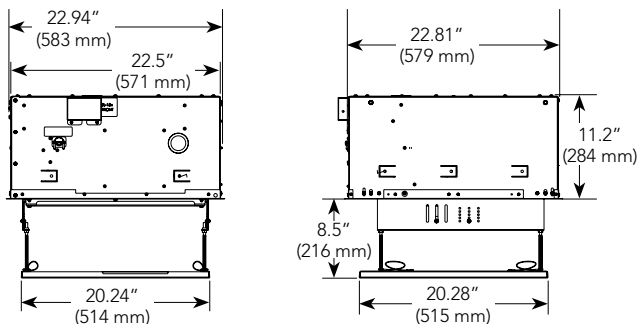
FLEXIBLE INSTALLATION

Independent roll, pitch and yaw

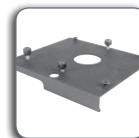
WIRE MORE THAN ONE DEVICE



TECHNICAL DRAWINGS



RECOMMENDED ACCESSORIES



SLB ■ Projector Interface Bracket (required)



IR10 ■ Infrared Remote Control